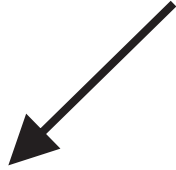
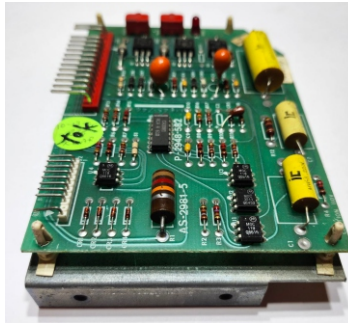
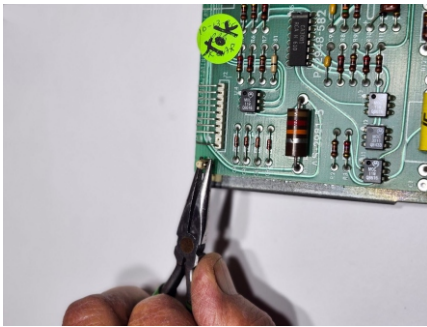


E-2000 HOPPER CONTROL BOARD



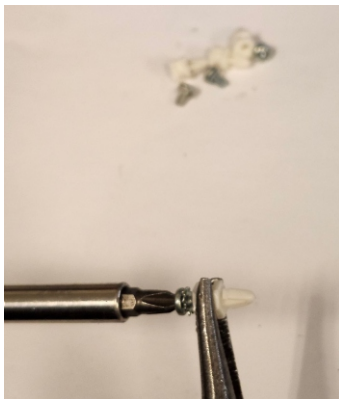
REMOVE THE ORIGINAL BOARD BY SQUEEZING THE FOUR PLASTIC KEEPER PINS AND PRYING EACH CORNER OF THE BOARD OFF OF THE BRACKET THEN COMPLETELY REMOVE THE PLASTIC KEEPER PINS AND DISCARD.



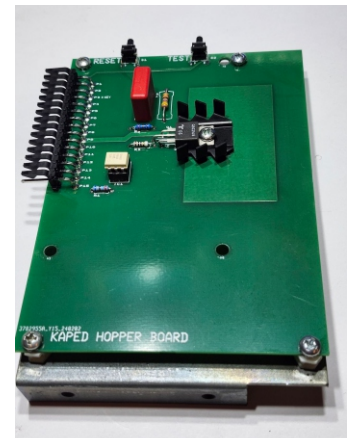
LOCATE THE 4 SCREWS AND THE 4 BOARD MOUNTING STUDS.



PREPARE THE 4 MOUNTING STUDS BY STARTING EACH SCREW INTO A STUD TO CREATE A THREADED HOLE.



MOUNT THEM ONTO THE BACK OF THE NEW BOARD IN THE HOLES SEEN IN THE PHOTO.



COMPLEMENTS OF KLAR Electronic Slot Repair
www.slotmachinerepair.com
klar.slotrepair@gmail.com

SNAP THE NEW BOARD WITH MOUNTING STUDS INSTALLED ONTO THE ORIGINAL BRACKET.