



Bally Alpha System Setup
With Progressive and TITO

| MPU Part# | Description | Board | Bios | Clear Chip | OS |
|-----------|----------------------------------|--------------|-----------------|-----------------|-----------------|
| 200173 | 300/400 MHz MPU, write protected | PCA39456-0-0 | AVBBPRO0R807-00 | AVOCLEAR0312-04 | AVOS00000317-XX |
| | | | AVBBPRO0R809-00 | AVOCLEAR0320-00 | AVOS00000322-XX |
| | | | AVBBPRO0R809-00 | AVOCLEAR0320-00 | AVOS00000323-XX |
| | | | AVBBPRO0R809-00 | AVOCLEAR0320-00 | AVOS00000325-XX |
| | | | AVBBPRO0R809-00 | AVOCLEAR0320-00 | AVOS00000326-XX |
| | | | AVBBP26S300M-03 | AVOCLEAR0335-01 | AVOS00000336-XX |
| | | | AVBBP26S300M-03 | AVOCLEAR0335-01 | AVOS00000341-XX |

| MPU Part# | Description | Board | Bios | Clear Chip | OS |
|-----------|--|--------------|-----------------|-----------------|-----------------|
| 201819 | 300/400 MHz MPU w/ dual video, write protected | PCA39456-0-0 | AVBBPRO0R807-00 | AVOCLEAR0312-04 | AVOS00000317-XX |
| | | | AVBBPRO0R809-00 | AVOCLEAR0320-00 | AVOS00000322-XX |
| | | | AVBBPRO0R809-00 | AVOCLEAR0320-00 | AVOS00000323-XX |
| | | | AVBBPRO0R809-00 | AVOCLEAR0320-00 | AVOS00000325-XX |
| | | | AVBBPRO0R809-00 | AVOCLEAR0320-00 | AVOS00000326-XX |
| | | | AVBBP26S300M-03 | AVOCLEAR0335-01 | AVOS00000336-XX |
| | | | AVBBP26S300M-03 | AVOCLEAR0335-01 | AVOS00000341-03 |

| MPU Part# | Description | Board | Bios | Clear Chip | OS |
|-----------|-------------------------------------|--------------|-----------------|-----------------|-----------------|
| 203588 | 1 GHz Standard MPU, write protected | PCA39456-4-0 | AVBPROD0R019-00 | AVOCLEAR0312-04 | AVOS00000318-XX |
| | | | AVBBPRO0R100-00 | AVOCLEAR0320-00 | AVOS00000320-XX |
| | | | AVBBPRO0R100-00 | AVOCLEAR0320-00 | AVOS00000322-XX |
| | | | AVBBPRO0R100-00 | AVOCLEAR0320-00 | AVOS00000323-XX |
| | | | AVBBPRO0R100-00 | AVOCLEAR0320-00 | AVOS00000325-XX |
| | | | AVBBPRO0R100-00 | AVOCLEAR0320-00 | AVOS00000326-XX |
| | | | AVBBP26S1GHZ-03 | AVOCLEAR0335-01 | AVOS00000336-XX |
| | | | AVBBP26S1GHZ-03 | AVOCLEAR0335-01 | AVOS00000341-XX |

| MPU Part# | Description | Board | Bios | Clear Chip | OS |
|--------------|--|--------------|-----------------|-----------------|-----------------|
| 203604-00002 | 1 GHz MPU w/ dual video, write protected | PCA39456-4-0 | AVBBPRO0R100-00 | AVOCLEAR0320-00 | AVOS00000320-XX |
| | | | AVBBPRO0R100-00 | AVOCLEAR0320-00 | AVOS00000322-XX |
| | | | AVBBPRO0R100-00 | AVOCLEAR0320-00 | AVOS00000323-XX |
| | | | AVBBPRO0R100-00 | AVOCLEAR0320-00 | AVOS00000325-XX |
| | | | AVBBPRO0R100-00 | AVOCLEAR0320-00 | AVOS00000326-XX |
| | | | AVBBP26S1GHZ-03 | AVOCLEAR0335-01 | AVOS00000336-XX |
| | | | AVBBP26S1GHZ-03 | AVOCLEAR0335-01 | AVOS00000341-XX |

| MPU Part# | Description | Board | Bios | Clear Chip | OS |
|-----------|-----------------------------|---------------|-----------------|-----------------|-----------------|
| 204694 | 1 GHz IMPU, write protected | PCA204934-0-0 | AVBBPRORIMPU-02 | AVOCLEAR0320-00 | AVOS00000320-XX |
| | | | AVBBPRORIMPU-02 | AVOCLEAR0320-00 | AVOS00000322-XX |
| | | | AVBBPRORIMPU-02 | AVOCLEAR0320-00 | AVOS00000323-XX |
| | | | AVBBPRORIMPU-02 | AVOCLEAR0320-00 | AVOS00000325-XX |
| | | | AVBBPRORIMPU-02 | AVOCLEAR0320-00 | AVOS00000326-XX |
| | | | AVBBP26SIMP-05 | AVOCLEAR0335-01 | AVOS00000336-XX |
| | | | AVBBP26SIMP-07 | AVOCLEAR0335-01 | AVOS00000336-08 |
| | | | AVBBP26SIMP-07 | AVOCLEAR0335-01 | AVOS00000336-09 |
| | | | AVBBP26SIMP-07 | AVOCLEAR0335-01 | AVOS00000336-11 |
| | | | AVBBP26SIMP-07 | AVOCLEAR0335-01 | AVOS00000341-XX |

| MPU Part# | Description | Board | Bios | Clear Chip | OS |
|-----------|---|---------------|-----------------|-----------------|-----------------|
| 204965 | 1 GHz IMPU w/ dual video, write protected | PCA204934-0-0 | AVBBPRORIMPU-02 | AVOCLEAR0320-00 | AVOS00000320-XX |
| | | | AVBBPRORIMPU-02 | AVOCLEAR0320-00 | AVOS00000322-XX |
| | | | AVBBPRORIMPU-02 | AVOCLEAR0320-00 | AVOS00000323-XX |
| | | | AVBBPRORIMPU-02 | AVOCLEAR0320-00 | AVOS00000325-XX |
| | | | AVBBPRORIMPU-02 | AVOCLEAR0320-00 | AVOS00000326-XX |
| | | | AVBBP26SIMP-05 | AVOCLEAR0335-01 | AVOS00000336-XX |
| | | | AVBBP26SIMP-07 | AVOCLEAR0335-01 | AVOS00000336-08 |
| | | | AVBBP26SIMP-07 | AVOCLEAR0335-01 | AVOS00000336-09 |
| | | | AVBBP26SIMP-07 | AVOCLEAR0335-01 | AVOS00000336-11 |
| | | | AVBBP26SIMP-07 | AVOCLEAR0335-01 | AVOS00000341-XX |

| MPU Part# | Description | Board | Bios | Clear Chip | OS | Media Services | Install Chip |
|-----------|-------------------------|---------------|---------------------------|------------|-------------------------------|----------------|--------------|
| 212233 | ASY,MPU/HSG.W/QUAD VID. | PCA212268-0-0 | 183119A(CF) 183115A(Prom) | 162385A | 176261E AVOS00000352-04 | N/A | 170793E |
| | | | 183119A(CF) 183115A(Prom) | 162385A | OS352F AVOS00000352-05 | N/A | 170793E |
| | | | 183119A(CF) 183115A(Prom) | 162385B | OS352G AVOS00000352-06 | N/A | 183118A |
| | | | 183119A(CF) 183115A(Prom) | 162385B | OS352H AVOS00000352-07 | N/A | 183118A |
| | | | 183119A(CF) 183115A(Prom) | 162385B | OS352I AVOS00000352-08 | N/A | 183118A |
| | | | 194165B(CF) 194162B(Prom) | 195690A | BAL_OS356D AVOS00000356-03 | BAL_194238D | 195691B |
| | | | 194165B(CF) 194162B(Prom) | 195690A | BAL_OS356F AVOS00000356-05 | BAL_194238E | 195691D |
| | | | 194165B(CF) 194162B(Prom) | 195690A | BAL_OS356G AVOS00000356-06 | BAL_194238E | 195691D |

| MPU Part# | Description | Board | Bios | Clear Chip | OS | Media Services | Install Chip |
|-----------|---|---------------|---------------------------|------------|--------------------------------------|----------------|--------------|
| 219737 | ASY,IMPU,ALPHA 2,MARVELL W/NVIDIA VIDEO | PCA212268-2-0 | 183119A(CF) 183115A(Prom) | 162385B | 176261E OS352F AVOS00000352-05 | N/A | 183118A |
| | | | 183119A(CF) 183115A(Prom) | 162385B | OS352G AVOS00000352-06 | N/A | 183118A |
| | | | 183119A(CF) 183115A(Prom) | 162385B | OS352H AVOS00000352-07 | N/A | 183118A |
| | | | 183119A(CF) 183115A(Prom) | 162385B | OS352I AVOS00000352-08 | N/A | 183118A |
| | | | 194165B(CF) 194162B(Prom) | 195690A | BAL_OS356D AVOS00000356-03 | BAL_194238D | 195691B |
| | | | 194165B(CF) 194162B(Prom) | 195690A | BAL_OS356F AVOS00000356-05 | BAL_194238E | 195691D |
| | | | 194165B(CF) 194162B(Prom) | 195690A | BAL_OS356G AVOS00000356-06 | BAL_194238E | 195691D |
| | | | | | | | |

| MPU Part# | Description | Board | Bios | Clear Chip | OS |
|-----------|---|---------------|-----------------|-----------------|-----------------|
| 209194 | 1 GHz IMPU, write enabled, download only | PCA204934-1-0 | AVBBPRORIMPU-02 | AVOCLEAR0320-00 | AVOS00000321-XX |

| MPU Part# | Description | Board | Bios | Clear Chip | OS |
|-----------|---|---------------|-----------------|-----------------|-----------------|
| 209195 | 1 GHz IMPU, w/ dual video, write enabled, download | PCA204934-1-0 | AVBBPRORIMPU-02 | AVOCLEAR0320-00 | AVOS00000321-XX |

| MPU Part# | Description | Board | Bios | Clear Chip | OS |
|-----------|---|---------------|--------|------------|---------------|
| 209194 | 1 GHz IMPU, write enabled, download only | PCA204934-1-0 | 12118B | 20176E | OS 3.00.21 NY |

| MPU Part# | Description | Board | Bios | Clear Chip | OS |
|-----------|---|---------------|--------|------------|---------------|
| 209195 | 1 GHz IMPU, w/ dual video, write enabled, download | PCA204934-1-0 | 12119B | 20176E | OS 4.00.06 NY |

| MPU Part# | Description | Board | Bios | Clear Chip | OS |
|-----------|-------------------------------------|--------------|-----------------|-----------------|-----------------|
| 203587 | 1 GHz Standard MPU, write protected | PCA39456-4-0 | AVBBP26S1GHZ-05 | AVOCLEAR0342-00 | AVOS00000342-04 |

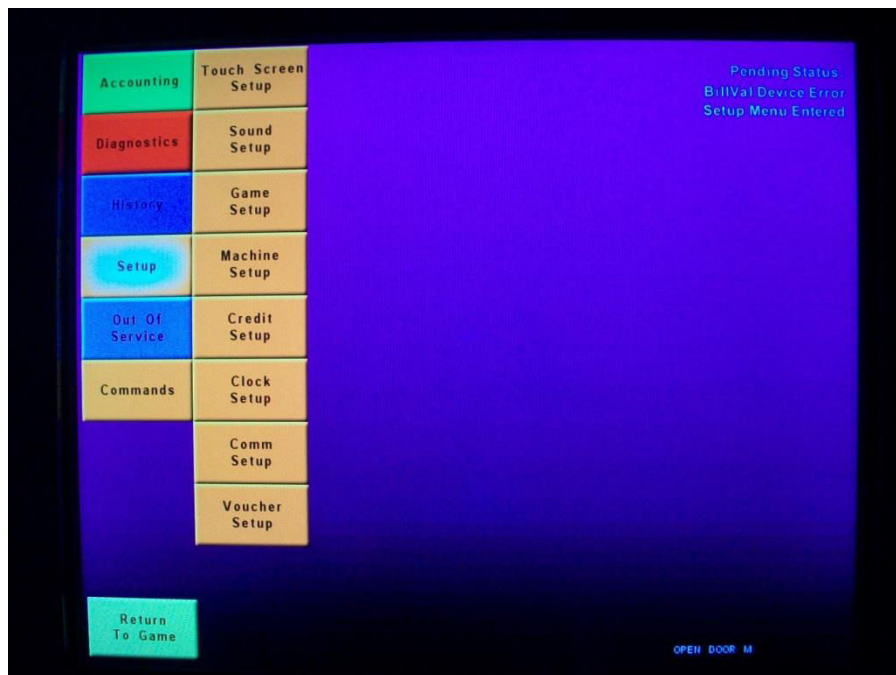
| MPU Part# | Description | Board | Bios | Clear Chip | OS |
|-----------|-------------------------------------|---------------|-----------------|-----------------|-----------------|
| 203587 | 1 GHz Standard MPU, write protected | PCA204934-0-0 | AVBBP26SIMPU-08 | AVOCLEAR0342-00 | AVOS00000342-04 |

Bally Alpha Progressive Setup

by TJ Lee

1. Select the correct CLEAR card for your machine (See CLEAR card table).
2. Open flash card door and remove top OS card and replace it with the CLEAR card. Remember top card slot is for the OS card and the bottom slot for your Game card.
3. You can remove Game card too so the CLEAR loads faster but it is not necessary to make the CLEAR work.
4. Turn on slot and allow CLEAR card to load. Follow screen instructions to CLEAR the slot.
5. When done shut off slot remove CLEAR card and put OS and Game cards back in proper slots.

To get to the Alpha setup screen push little **white button** on the MPU brain box. **DO NOT CLOSE DOOR.** This should bring up a setup screen with a purple background.



If you look at the upper left corner you will see the Pending Status of your slot. It tells what must be setup for your machine and any errors or menus entered. Press **Setup** to bring this menu up. This is the only submenu you will be working from.

IMPORTANT - Before you start your setup you will need to look up the Progressive Jackpot Configuration for your particular slot game. You can find these tables at the end of this document. Look up your game and write down your jackpot settings. You will need these later to set jackpot amounts. These must be set correctly or you will get an invalid progressive error on your slot

NOTE - The following color codes are being used to indicate what menu button to press in this setup. **Red** indicates the proper Setup menu button to press. **Green** indicates the proper submenu to be in. You can back out of menus by pressing the Previous or Exit buttons. If you push the Return to Game button you will have to press the little white button again on the MPU to get back into setup mode.

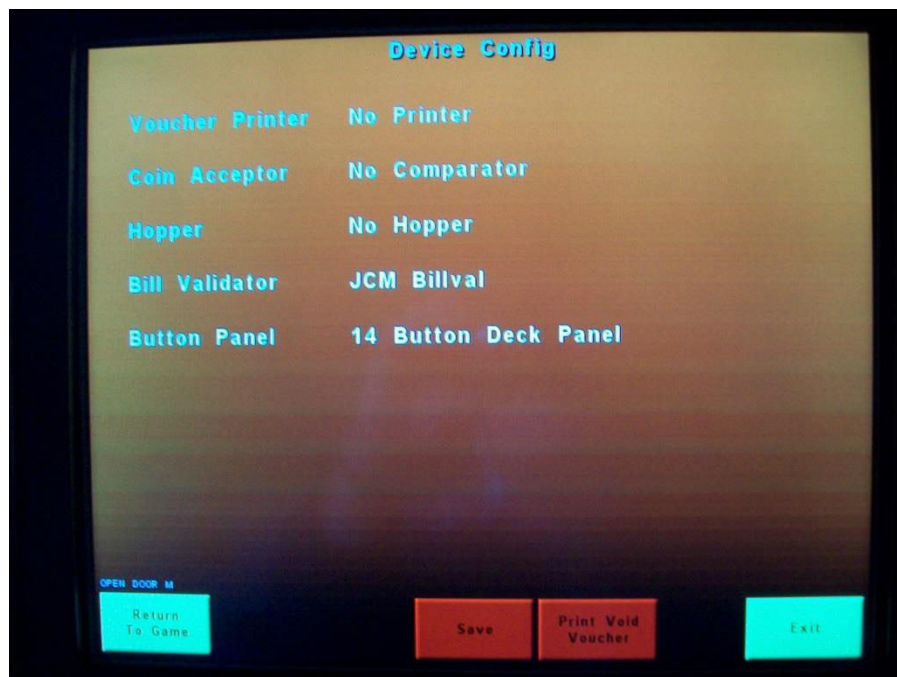
Touchscreen Setup

1. Press the **Touchscreen** setup button and follow the instructions to calibration of the screen. You will need to “key” the slot during the setup. This simply means to turn key on the side of the machine.
-

Clock Setup

1. Press the **Clock Setup** button and set date and time.
-

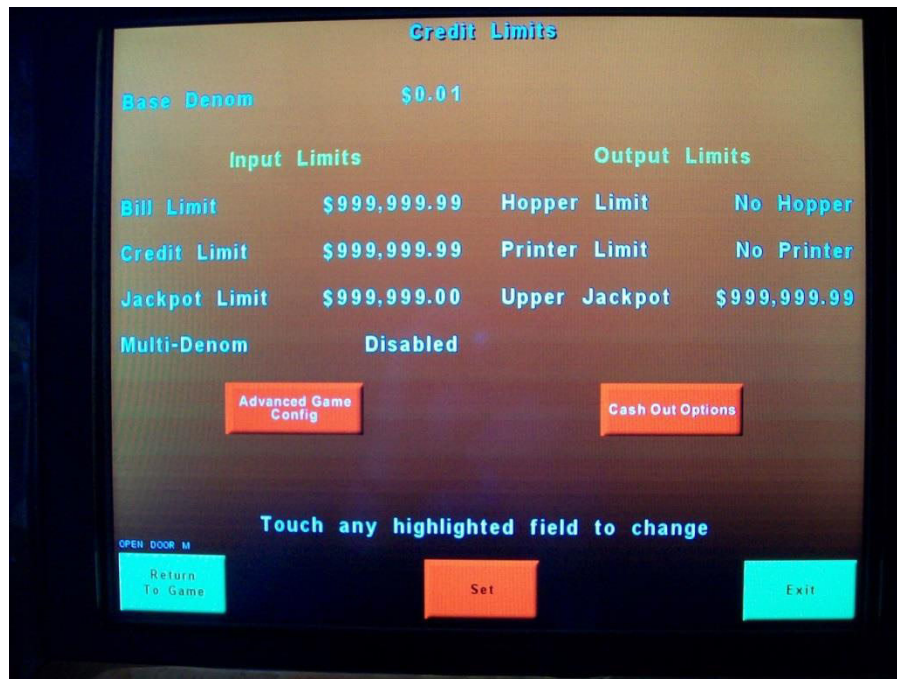
Machine Setup then **Device Config**



(This screen shows devices set and your ready to EXIT)

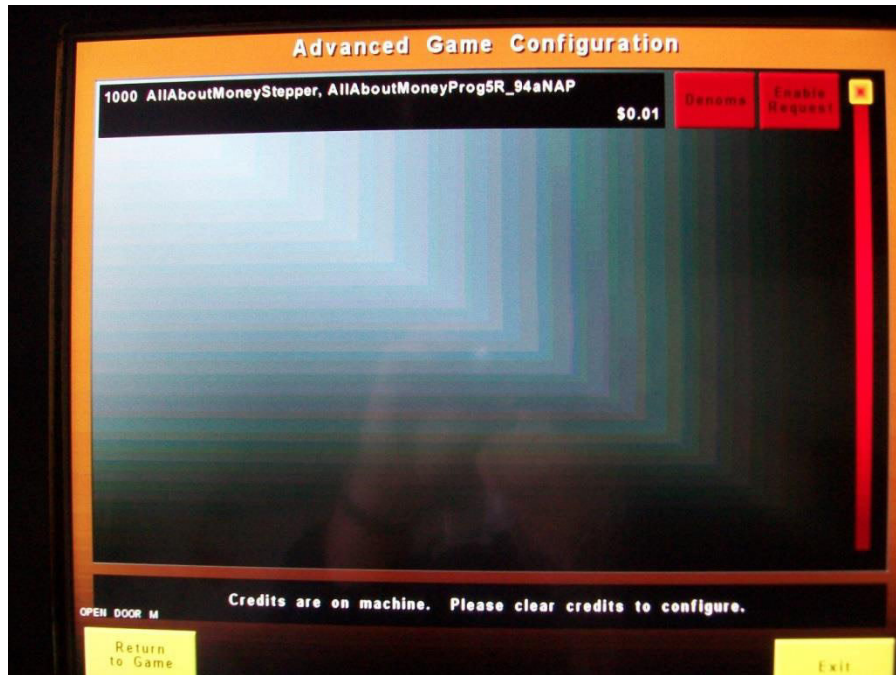
1. Press the black **Not Set** button next to each device listed and choose the device used in your slot
2. When you are finished selecting devices press the SAVE button and then EXIT button to go back to Submenu.
3. **Important!!** Make sure you have selected the correct devices before you press SAVE as you will not be able to change them without clearing the machine again.

Credit Setup then Credit Limits



1. In this screen we will be setting up the Base Denomination and the Limits of the slot.
 2. Pressing each black box allows the user to set the values using a keypad on the screen
 3. I suggest you set the Base Denomination to .01. This will make it easier to figure the Jackpot settings later in the setup.
 4. Many of the dollar amounts are controlled by the jurisdiction chip in the slot. Most jurisdiction chips only allow \$1200 for a Jackpot limit. If the numbers you input do not work simply lower the amounts until they do work. The screen above is an example of a setup using a no limit chip.
 5. **Important!!** The **Multi-Denom** button must be **Disabled** to set up an internal progress on your slot. If this is not set this way you will not be able to set up the progressive.
 6. Remember to set this up right the first time as you cannot change it without clearing the machine.
 7. When you are finished press the **Set** button but **do not EXIT** this screen
 8. We now need to press the **Advance Game Config** button
-

Credit Setup then **Credit Limits** then **Advanced Game Config**



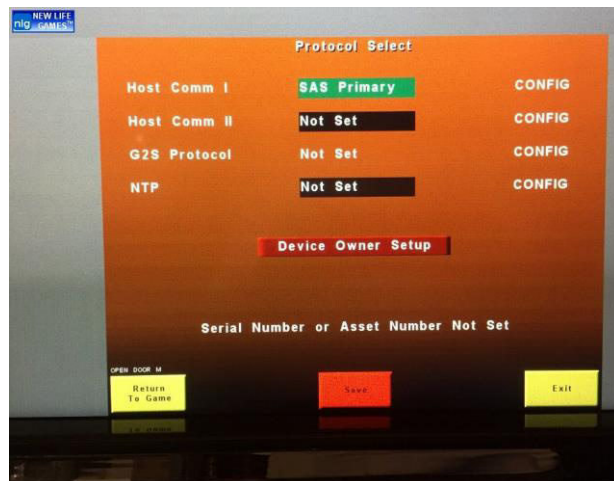
1. Press **Create New Game** Button. In our case above the game is All About Money
2. You should see two columns with the name of your game in the left column.
3. Press the black box game selection on the left and a second column on the right should show up
4. This is your different Pay Back percentages for this game with the bottom selection being the highest pay back percentage. I always choose the highest percentage. Press your PayBack percentage box.
5. Another screen will come up with the PayBack demoninations. Always choose .01 as this is your multiplier for your Jackpot settings. This always you to multiple by .01 making it easier to setup the progressive table. Touch DONE
6. You will now see the screen similar to the one above if you have done this correctly
7. Press SAVE ALL to save this setup
8. Press EXIT once and then EXIT again on the previous screen.
9. This should take you back to the MAIN setup screen
10. We are now ready to setup the game.

GAME SETUP then **Game Setup Screen**

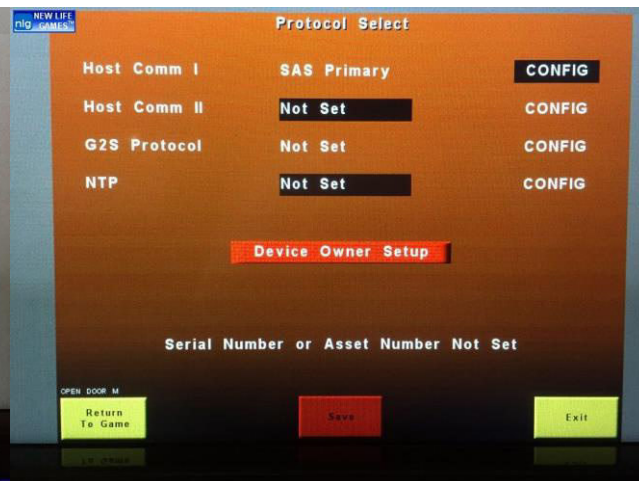
1. Here you will be selecting the number of Payout lines and the Button Panel Layout
2. Choose the correct settings for your game
3. Save and Exit this when you are done

COM SETUP then **Protocol Select Screen** (Not needed if not using a TITO)

1. Set Host Comm 1 to SAS Primary by pressing black box (Screen 1) -- Press Save
2. Now Press the Config Button -- Screen 3 will appear – Change Validation to System – Press Save
3. Press Previous and Device Owner Screen 4 should appear – Choose settings as shown in Screen 4
4. Press Save and Exit (Previous) back to Main Setup Menu



Screen 1



Screen 2



Screen 3



Screen 4

COMM SETUP—Progressive Setup button—Progressive screen

1. You should be seeing a progressive screen now.
2. Select Add New Progressive—A black box should now show up on screen with two columns and with game name on the right. Press game black box name.
3. The game should now show up in the game pay table. Press on it and the denomination should show up in the bottom boxes. In our case it should be .01.
4. Press and denomination .01 box and touch DONE.
5. You should now see a screen that shows the game, the denomination, and a CONFIG button
6. Press the press CONTROLLER SETUP button at the bottom of the screen and select
7. You should now see a screen that says Add Progressive Controller – Click ADD controller on bottom of the screen
8. Touch controller black box and select “internal” for the controller
9. Hit set at the bottom of the screen and then touch the CONFIG box at the top
10. You will now see the screen shown below

Internal.1

Denomination: \$0.01

| Levels | Contribution | Reset | Current* | Maximum |
|---------|--------------|-------------|-------------|----------------|
| L1 JP | 1.0000 % | \$20,000.00 | \$20,015.81 | \$9,999,999.99 |
| L2 JP | 1.5000 % | \$2,000.00 | \$2,023.72 | \$9,999,999.99 |
| L3 JP | 2.0000 % | \$500.00 | \$531.62 | \$9,999,999.99 |
| L4 JP | 2.5000 % | \$200.00 | \$239.53 | \$9,999,999.99 |
| L5 JP | 3.0000 % | \$50.00 | \$65.08 | \$9,999,999.99 |
| L6 NONE | 0.0000 % | \$0.00 | \$0.00 | \$9,999,999.99 |
| L7 NONE | 0.0000 % | \$0.00 | \$0.00 | \$9,999,999.99 |
| L8 NONE | 0.0000 % | \$0.00 | \$0.00 | \$9,999,999.99 |

* The "Current" value may reflect amounts in escrow or shortages.

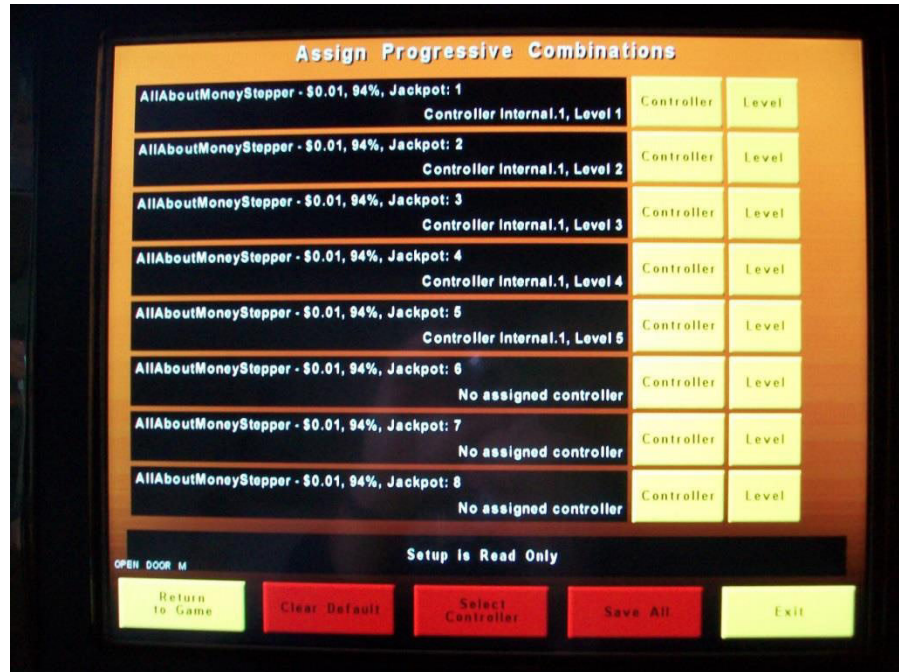
Touch any highlighted field to change.

OPEN DOOR M

Return To Game Default Config Save Override Current Previous

11. The screen above shows a PayOut table already set up. The values of the table are determined by looking up your game in the Bally PayOut table PDF file.
12. Press and select the number of levels your game has from PDF file (The above is five)
13. Use the formula shown in the PayOut PDF to calculate each level
14. Formula is usually First number in PayTable x MAX BET of machine x Denomination
Example: 10,000 x 200 x .01 which in this case is \$20,000
15. This goes into Reset column of table -- Calculate for each level using PDF table for your game.
16. For percentages put in whatever suits you -- I like to do percentages shown in the screen above. The higher the number the more is added to the progressive amount after play.
17. Select SAVE to lock in your PayOut values.
18. EXIT back to Progressive Setup Screen and Press CONFIG
19. You are now on the Assign Progressive Combinations

20. Press Select Controller and select internal and save. You should now see the screen shown on next page



21. Press Save All and Exit that Screen

22. Press SAVE All on next screen and then EXIT to the main menu.

All your errors should be cleared now and the slot ready to go. Shut the door and GOOD LUCK

Alpha Game Platform™ Progressive Jackpot Configuration Data

INSTRUCTIONS

1. Use the following tables to configure progressive jackpots on the Alpha Game Platform™.
2. See the Jackpot Category Settings table for configuration details.
3. For more information, contact Technical Support at techsupportgames@ballytech.com or (702) 584-7849.



NOTE

X or XX indicates the game software version number.



CAUTION

* Use the SMI number (if displayed) to determine the Jackpot Category. Jackpot categories for specific game software part numbers may vary depending upon the displayed SMI number.

GAME INFORMATION

Single Letter Jackpot Categories

| Game Software Part Number | SMI Number | Game Name | Jackpot Category | Progressive Name | Description | Setup Screen Group |
|---------------------------|------------|---------------------------|------------------|---------------------|-----------------------------|--------------------|
| ASG24KT53160-XX | | 24 Karat™ | A | | | |
| ASGBV7S01001-XX | | Black Velvet™ 7's | A | | | |
| ASGBL7501001-XX | | Blazing 7's™ | A | | | |
| ASGDMDV01001-XX | | Diamonds & Devils™ | A | | | |
| ASGDMDV02001-XX | | Diamonds & Devils™ | A | | | |
| 300310X | | Diamonds & Devils™ Deluxe | A | | | |
| ASGLT7S01605-XX | | Lightning Sevens™ | A | | | |
| ASGBW7301600-XX | | Black & White™ Sevens | A | | 3 Reel, 25 Line, 125 Credit | |
| ASGBL7311600-XX | | Blazing 7's™ | A | | 3 Reel, 25 Line, 125 Credit | |
| ASGBLW701001-XX | | Black & White™ Sevens | A | | Stepper Reel | |
| ASGBN7501001-XX | | Bonus Sevens™ | A | | Stepper Reel | |
| ASGBN7501085-XX | | Bonus Sevens™ | A | | Stepper Reel | |
| B520054x | | 24 Karat™ | A | Class II | Stepper Reel | |
| B515004x | | Black & White™ Sevens | A | Class II | Stepper Reel | |
| B520055x | | Black Velvet™ 7's | A | Class II | Stepper Reel | |
| B520011x | | Blazing 7's™ | A | Class II | Stepper Reel ONLY | |
| B515003x | | Bonus Sevens™ | A | Class II | Stepper Reel ONLY | |
| B520034x | | Diamonds & Devils™ | A | Class II | Stepper Reel | |
| AVGB7GD01000-XX | | Blazing 7's Grand™ | A | | Video | |
| ASGDMDV850001-XX | | Diamonds & Devils™ Deluxe | A | | 5 Reel, 25 Line, 75 Credit | |
| ASGHH0001001-XX | | Hee Haw | B | | | |
| B520035x | | Hee Haw | B | Class II | Stepper Reel or Video | |
| ASGQHGB01001-XX | | Golden Bell™ | B | Quick Hit Jackpots™ | | |
| 31285x | | Golden Bell™ | B | Quick Hit Jackpots™ | Stepper Reel or Video | |
| ASGQHWFO1001-XX | | White Fire™ | B | Quick Hit Jackpots™ | | |
| ASGQHWB01001-XX | | Wild Blue™ Jackpot | B | Quick Hit Jackpots™ | | |
| 31426x | | Wild Blue™ Jackpot | B | Quick Hit Jackpots™ | Stepper Reel or Video | |
| ASGQHWR01001-XX | | Wild Red™ Jackpot | B | Quick Hit Jackpots™ | | |



Alpha Game Platform™ Progressive Jackpot Configuration Data

| Game Software Part Number | SMI Number | Game Name | Jackpot Category | Progressive Name | Description | Setup Screen Group |
|---------------------------|------------|--------------------------------|------------------|-------------------------------------|------------------------------------|--------------------|
| ASGQHAR01001-XX | | Amber Rays™ | B | Quick Hits™ | | |
| ASGQHBW01001-XX | | Black & White™ | B | Quick Hits™ | | |
| ASGQHGB01001-XX | | Black Gold™ | B | Quick Hits™ | | |
| 300415X | | Black Gold™ | B | Quick Hits™ | Chilean, High Denomination | |
| 300416X | | Black Gold™ | B | Quick Hits™ | French Canadian, High Denomination | |
| ASGQHBW01001-XX | | Blazing 7's™ Wild Jackpot | B | Quick Hits™ | | |
| ASGQHGS01001-XX | | Gold Storm™ | B | Quick Hits™ | | |
| ASGQHRS01001-XX | | Silver Rain™ | B | Quick Hits™ | | |
| ASGQHSF01001-XX | | Starlight Fire™ | B | Quick Hits™ | | |
| ASGQHSB01001-XX | | Stars and Bars | B | Quick Hits™ | | |
| ASGQHBW035DL-XX | | Black & White™ Wild Jackpot | B | Quick Hits™, Downloadable Series | 5 Reel, Stepper Reel | |
| ASGQHGB035DL-XX | | Golden Bell™ | B | Quick Hits™, Downloadable Series | 5 Reel, Stepper Reel | |
| ASGQHWR035DL-XX | | Wild Red™ Jackpot | B | Quick Hits™, Downloadable Series | 5 Reel, Stepper Reel | |
| ASGQHWB035DL-XX | | Wild Blue™ Jackpot | B | Quick Hits™, Downloadable Series | 5 Reel, Stepper Reel | |
| B520032x | | Black & White™ | B | Quick Hits™, Wild Jackpot, Class II | 5 Reel, Stepper Reel or Video | |
| B520029x | | Black Gold™ | B | Quick Hits™, Wild Jackpot, Class II | 5 Reel, Stepper Reel or Video | |
| B520030x | | Stars and Bars | B | Quick Hits™, Wild Jackpot, Class II | 5 Reel, Stepper Reel or Video | |
| B530024X | | Golden Bell™ | B | Quick Hits™, Class II | 5 Reel, Stepper Reel or Video | |
| B530025X | | White Fire™ | B | Quick Hits™, Class II | 5 Reel, Stepper Reel or Video | |
| B530026X | | Wild Blue™ Jackpot | B | Quick Hits™, Class II | 5 Reel, Stepper Reel or Video | |
| B530027X | | Wild Red™ Jackpot | B | Quick Hits™, Class II | 5 Reel, Stepper Reel or Video | |
| 300311X | | Golden Bell™ | B | Quick Hits™, Downloadable Series | 5 Reel, Stepper Reel | |
| 300312X | | Wild Red™ Jackpot | B | Quick Hits™, Downloadable Series | 5 Reel, Stepper Reel | |
| 300313X | | Wild Blue™ Jackpot | B | Quick Hits™, Downloadable Series | 5 Reel, Stepper Reel | |
| 300314X | | Black Gold™ Wild | B | Quick Hits™, Downloadable Series | 5 Reel, Stepper Reel | |
| 300315X | | Wild Stars and Bars | B | Quick Hits™, Downloadable Series | 5 Reel, Stepper Reel | |
| 300316X | | Triple Blazing 7s Wild Jackpot | B | Quick Hits™, Downloadable Series | 5 Reel, Stepper Reel | |
| B520033x | | Triple Blazing 7s | B | Quick Hits™, Wild Jackpot, Class II | 5 Reel, Stepper Reel or Video | |
| 22612-XX | | Triple Blazing 7s Wild Jackpot | B | Quick Hits™ | | |
| 300174X | | Golden Bell™ | B | | | |
| ASGQHBW01001-XX | | Triple Blazing 7s | B | Quick Hits™, Wild Jackpot | 5 Reel, 30 Line, 300 Credit | |
| 301152X | | Money Moon™ | B | | 5 Reel, 30 Line, 300 Credit | |
| 301168X | | Paradise Beach™ | B | | 5 Reel, 30 Line, 300 Credit | |
| 20321X | | All About Money™ | C | Hot Shot Progressive | | |
| 20363X | | All About Money™ | C | Hot Shot Progressive | | |
| 10816X | | Blazing 7's™ | C | Hot Shot Progressive | | |
| ASGB7HS01001-XX | | Blazing 7's™ | C | Hot Shot Progressive | Video | |
| ASGB7HS83001-XX | | Blazing 7's™ | C | Hot Shot Progressive | 83% Version | |
| 20392X | | Blazing 7's™ | C | Hot Shot Progressive | 83% Version Video | |
| 20370X | | Winning Time\$™ | C | Hot Shot Progressive | | |
| 21882X | | Winning Time\$™ | C | Hot Shot Progressive | | |
| B520051x | | All About Money™ | C | Hot Shot Progressive, Class II | | |
| B520045x | | Blazing 7's™ | C | Hot Shot Progressive, Class II | Stepper Reel or Video | |



Alpha Game Platform™ Progressive Jackpot Configuration Data

| Game Software Part Number | SMI Number | Game Name | Jackpot Category | Progressive Name | Description | Setup Screen Group |
|---------------------------|------------|-----------------------------------|------------------|--------------------------------|------------------------------|--------------------|
| 20557x | | Ca\$h Wheel™ | C | Hot Shot Progressive | | |
| 20671x | | Blazing 7's™ | C | Hot Shot Progressive | 15 Reels | |
| 20401x | | Winning Time\$™ | C | Hot Shot Progressive | Chinese | |
| 300307-B | | Ca\$h Wheel™ | C | | | |
| 21216-XX | | Blazing 7's™ | C | Hot Shot Progressive | | |
| B520050x | | Winning Time\$™ | C | Hot Shot Progressive, Class II | | |
| 300183X | | Blazing 7's™ | C | Hot Shot Progressive, Class II | | |
| 300494-XX | | Blazing 7's™ | C | Hot Shot Progressive | 15 Reel Video | |
| 300307X | | Blazing 7's™, Cash Wheel | C | Hot Shot Progressive | 5 Reel, 40 Line, 200 Credit | |
| 300539X | | All About Money™, Cash Wheel | C | Hot Shot Progressive | 5 Reel, 40 Line, 200 Credit | |
| 300536X | | All About Money™ | C | Hot Shot Progressive | 15 Reel, 40 Line | |
| 300856X | | Hot Shot Progressive, 4 in 1 | C | Hot Shot Progressive | 20 Reel, 40 Line, 400 Credit | |
| ASGPFZY01001-XX | | Penny Frenzy™ | D | | | |
| AVGBXBN00100-XX | | Boxcar Bonus™ | D | | | |
| 300338X | | Ca\$h Wheel™ | E | (Old School) | 3 Reels, 5 Line, 5 Credit | |
| ASGDBDL01000-XX | | Double Diamond Line | E | | | |
| AVGBJPG01700-XX * | J0044 | Multi-Play Blackjack | E | | 95.47% | |
| 300298X * | J0044 | Multi-Play Blackjack | E | | 95.47% | |
| ASGDBL701000-XX | | Double Blazing 7's | F | | | |
| ASGDJBW01000-XX | | Double Jackpot Black & White | F | | | |
| ASGDJB701000-XX | | Double Jackpot Triple Blazing 7's | F | | | |
| ASGFBFR01000-XX | | Fireball Frenzy™ | F | | | |
| AVGSFBF01600-XX | | Super Fireball Frenzy™ | F | | | |
| ASGWTMS01001-XX | | Winning Time\$™ | H | | | |
| ASGAMOG01024-XX | | American Original™ | I | | | |
| ASGAMOG00100-XX | | American Original™ | I | | Video | |
| ASGAMOG017IE-XX | | American Original™ | I | | Video | |
| 20412X | | Double Your Cash Adventure | I | | | |
| B525004x | | American Original™ | I | Class II | Stepper Reel or Video | |
| AVGAMOG00100-01 | | American Original™ | I | | | |
| AVGGMLM01600-XX | | Golden Monkey™ | J | | | |
| AVGGDTR017UI-XX * | Y1065 | Golden Treasure™ | J | Monkey Series Games | 85.06% | Low |
| AVGMGMK017UI-XX * | Y1077 | Magic Monkey™ | J | Monkey Series Games | 85.06% | Low |
| AVGMKFN017UI-XX * | Y1053 | Monkey's Fortune™ | J | Monkey Series Games | 85.06% | Low |
| AVGGDTR017UI-XX * | Y1066 | Golden Treasure™ | J | Monkey Series Games | 88.06% | Low |
| AVGMGMK017UI-XX * | Y1078 | Magic Monkey™ | J | Monkey Series Games | 88.06% | Low |
| AVGMKFN017UI-XX * | Y1054 | Monkey's Fortune™ | J | Monkey Series Games | 88.06% | Low |
| AVGGDTR017UI-XX * | Y1067 | Golden Treasure™ | J | Monkey Series Games | 90.04% | Low |
| AVGMGMK017UI-XX * | Y1079 | Magic Monkey™ | J | Monkey Series Games | 90.04% | Low |
| AVGMKFN017UI-XX * | Y1055 | Monkey's Fortune™ | J | Monkey Series Games | 90.04% | Low |
| AVGGDTR017UI-XX * | Y1068 | Golden Treasure™ | J | Monkey Series Games | 91.99% | Low |
| AVGMGMK017UI-XX * | Y1080 | Magic Monkey™ | J | Monkey Series Games | 91.99% | Low |
| AVGMKFN017UI-XX * | Y1056 | Monkey's Fortune™ | J | Monkey Series Games | 91.99% | Low |
| AVGGDTR017UI-XX * | Y1069 | Golden Treasure™ | J | Monkey Series Games | 93.97% | Low |
| AVGMGMK017UI-XX * | Y1081 | Magic Monkey™ | J | Monkey Series Games | 93.97% | Low |
| AVGMKFN017UI-XX * | Y1057 | Monkey's Fortune™ | J | Monkey Series Games | 93.97% | Low |
| AVGGDTR017UI-XX * | Y1070 | Golden Treasure™ | J | Monkey Series Games | 95.98% | Low |
| AVGMGMK017UI-XX * | Y1082 | Magic Monkey™ | J | Monkey Series Games | 95.98% | Low |
| AVGMKFN017UI-XX * | Y1058 | Monkey's Fortune™ | J | Monkey Series Games | 95.98% | Low |



Alpha Game Platform™ Progressive Jackpot Configuration Data

| Game Software Part Number | SMI Number | Game Name | Jackpot Category | Progressive Name | Description | Setup Screen Group |
|---------------------------|------------|----------------------------|------------------|------------------------------|--------------------------------------|--------------------|
| AVGGTDL017UI-XX * | Y1255 | Doubloon Lagoon™ | J | Goldbeard's Treasure™ Series | 85.06% | Low |
| AVGGTDL017UI-XX * | Y1256 | Doubloon Lagoon™ | J | Goldbeard's Treasure™ Series | 88.06% | Low |
| AVGGTDL017UI-XX * | Y1257 | Doubloon Lagoon™ | J | Goldbeard's Treasure™ Series | 90.04% | Low |
| AVGGTDL017UI-XX * | Y1258 | Doubloon Lagoon™ | J | Goldbeard's Treasure™ Series | 91.99% | Low |
| AVGGTDL017UI-XX * | Y1259 | Doubloon Lagoon™ | J | Goldbeard's Treasure™ Series | 93.97% | Low |
| AVGGTDL017UI-XX * | Y1260 | Doubloon Lagoon™ | J | Goldbeard's Treasure™ Series | 95.98% | Low |
| AVGGTMT017UI-XX * | Y1243 | Mermaid's Treasure™ | J | Goldbeard's Treasure™ Series | 85.06% | Low |
| AVGGTMT017UI-XX * | Y1244 | Mermaid's Treasure™ | J | Goldbeard's Treasure™ Series | 88.06% | Low |
| AVGGTMT017UI-XX * | Y1245 | Mermaid's Treasure™ | J | Goldbeard's Treasure™ Series | 90.04% | Low |
| AVGGTMT017UI-XX * | Y1246 | Mermaid's Treasure™ | J | Goldbeard's Treasure™ Series | 91.99% | Low |
| AVGGTMT017UI-XX * | Y1247 | Mermaid's Treasure™ | J | Goldbeard's Treasure™ Series | 93.97% | Low |
| AVGGTMT017UI-XX * | Y1248 | Mermaid's Treasure™ | J | Goldbeard's Treasure™ Series | 95.98% | Low |
| AVGGTPB017UI-XX * | Y1231 | Pirate Beach™ | J | Goldbeard's Treasure™ Series | 85.06% | Low |
| AVGGTPB017UI-XX * | Y1232 | Pirate Beach™ | J | Goldbeard's Treasure™ Series | 88.06% | Low |
| AVGGTPB017UI-XX * | Y1233 | Pirate Beach™ | J | Goldbeard's Treasure™ Series | 90.04% | Low |
| AVGGTPB017UI-XX * | Y1234 | Pirate Beach™ | J | Goldbeard's Treasure™ Series | 91.99% | Low |
| AVGGTPB017UI-XX * | Y1235 | Pirate Beach™ | J | Goldbeard's Treasure™ Series | 93.97% | Low |
| AVGGTPB017UI-XX * | Y1236 | Pirate Beach™ | J | Goldbeard's Treasure™ Series | 95.98% | Low |
| ASGGLMK117UI I-XX * | H0717 | Golden Monkey™ | J | International | 5 Reel, 25 Line, 125 Credits, 88.14% | |
| ASGGLMK117UI I-XX * | H0718 | Golden Monkey™ | J | International | 5 Reel, 25 Line, 125 Credits, 90.42% | |
| ASGGLMK117UI I-XX * | H0719 | Golden Monkey™ | J | International | 5 Reel, 25 Line, 125 Credits, 91.76% | |
| ASGGLMK117UI I-XX * | H0720 | Golden Monkey™ | J | International | 5 Reel, 25 Line, 125 Credits, 93.98% | |
| ASGGLMK117UI I-XX * | H0721 | Golden Monkey™ | J | International | 5 Reel, 25 Line, 125 Credits, 95.97% | |
| 300362X * | H0717 | Golden Monkey™ | J | International | 5 Reel, 25 Line, 125 Credits, 88.14% | |
| 300362X * | H0718 | Golden Monkey™ | J | International | 5 Reel, 25 Line, 125 Credits, 90.42% | |
| 300362X * | H0719 | Golden Monkey™ | J | International | 5 Reel, 25 Line, 125 Credits, 91.76% | |
| 300362X * | H0720 | Golden Monkey™ | J | International | 5 Reel, 25 Line, 125 Credits, 93.98% | |
| 300362X * | H0721 | Golden Monkey™ | J | International | 5 Reel, 25 Line, 125 Credits, 95.97% | |
| 20396X | | Cash Adventure™ | K | | | |
| AVGFRPL01000-XX | | Fairy Play™ Free Games | K | | | |
| AVGLULU00100-XX | | Lucky Luigi's Pizzeria™ | K | | | |
| AVGLKMN00100-XX | | Luckyman™ | K | | | |
| AVGLKMN116NV-XX | | Monster Luck™ | K | | | |
| 20331X | | New York Gold™ Progressive | K | | | |



Alpha Game Platform™ Progressive Jackpot Configuration Data

| Game Software Part Number | SMI Number | Game Name | Jackpot Category | Progressive Name | Description | Setup Screen Group |
|---------------------------|------------|----------------------------------|------------------|---|--------------------------------------|--------------------|
| AVGPBFG00100-XX | | Playboy Free Games | K | | | |
| ASGBFZY01605-XX | | Bonus Frenzy™ | K | | 4 Reel | |
| B510011 | | Arctic Ice™ | K | Class II | Video | |
| ASGFRIC01702-XX | | Fire and Ice™ | K | | | |
| 300219X | | Fire and Ice™ | K | | | |
| 300218X | | Red and Black Sevens™ | K | | | |
| ASGRDB701702-XX | | Red and Black Sevens™ | K | | | |
| ASGDMPR01702-XX | | Diamonds and Pearls™ | K | | | |
| 300220X | | Diamonds and Pearls™ | K | | | |
| 300372X | | Pink Pearl | K | | | |
| ASG2ND753150-XX | | 2nd Chance™ 7's | L | | | |
| ASGRLWNRNV00-XX | | Reel Winners™ | L | | | |
| ASGRLWR31600-XX | | Reel Winners™ | L | | | |
| ASGRLWR31685-XX | | Reel Winners™ | L | | | |
| ASGRLWNRNV85-XX | | Reel Winners™ Multi-Spin | L | | | |
| ASGUD7MW1001-XX | | Ultimate Diamonds & Sevens | L | Instant Spin | | |
| ASGUD7MWNV01-XX | | Ultimate Diamonds & Sevens | L | Multi-Spin | | |
| ASGUDSMW1001-XX | | Ultimate Dragon Spin | L | Instant Spin | | |
| ASGUDSMWNV01-XX | | Ultimate Dragon Spin | L | Multi-Spin | | |
| ASGUPSMW1001-XX | | Ultimate Party Spin™ | L | Instant Spin | | |
| ASGUPSMWNV01-XX | | Ultimate Party Spin™ | L | Multi-Spin | | |
| 300974X | | Dutchman's Gold™ | L | | 5 Reel, 25 Lines, 125 Credit Max Bet | |
| 300855X | | Inca Gold™ | L | | 5 Reel, 25 Lines, 125 Credit Max Bet | |
| ASGTP0001001-XX | | Tournament Progressives™ | M | Tournament Progressives | | |
| AVGQPBW017GL-XX | | Black & White™ Sevens | N | Quick Hit Platinum™ Series | | |
| AVGQPBW01700-XX | | Black & White™ Sevens | N | Quick Hit Platinum™ Series | | |
| AVGQPBG01700-XX | | Black Gold™ | N | Quick Hit Platinum™ Series | | |
| AVGQPBG017GL-XX | | Black Gold™ | N | Quick Hit Platinum™ Series | | |
| 300462X | | Black Gold™ | N | Quick Hit Platinum™ Series, Quebec | | |
| AVGQPSB017GL-XX | | Stars and Bars | N | Quick Hit Platinum™ Series | | |
| AVGQPSB01700-XX | | Stars and Bars | N | Quick Hit Platinum™ Series | | |
| AVGQPB701700-XX | | Triple Blazing 7s Wild Jackpot | N | Quick Hit Platinum™ Series | 5 Reel, 30 Lines, 150 Credit | |
| 300501X | | Triple Blazing 7s Wild Jackpot | N | Quick Hit Platinum™ Series | | |
| 300502X | | Triple Blazing 7s Wild Jackpot | N | Quick Hit Platinum™ Series, Quebec | | |
| AVGQDWB017UI-XX | | Wild Blue™ | N | Quick Hit Diamond Series | | |
| AVGQDWF017UI-XX | | White Fire™ | N | Quick Hit Diamond Series | | |
| AVGQDWR017UI-XX | | Wild Red™ | N | Quick Hit Diamond Series | | |
| AVGQDGB017UI-XX | | Golden Bells™ | N | Quick Hit Diamond Series | | |
| AVGPBPL01700-XX | | Playboy Platinum | N | | | |
| AVGPBPL017IE-XX | | Playboy Platinum | N | | | |
| 300239X | | Playboy Girls of Canada | N | | | |
| AVGPBG002600-XX | | Playboy Girls of Canada | N | | | |
| B530013X | | Triple Blazing 7's™ Wild Jackpot | N | Quick Hit Platinum Series, Class 2 | | |
| B530015X | | Black Gold™ Wild | N | Quick Hit Platinum Series, Class 2 | | |
| B530016X | | Stars and Bars | N | Quick Hit Platinum Series, Class 2 | | |
| B530017X | | Black & White™ Wild Jackpot | N | Quick Hit Platinum Series, Class 2 | | |
| AVGQPBG03500-XX | | Black Gold™ | N | Quick Hit Platinum Series, Downloadable | | |
| 300300X | | Black Gold™ | N | Quick Hit Platinum Series, Downloadable | | |
| 300301X | | Black & White™ Sevens | N | Quick Hit Platinum Series, Downloadable | | |
| 300302X | | Stars and Bars | N | Quick Hit Platinum Series, Downloadable | | |
| 300303X | | Triple Blazing 7's™ | N | Quick Hit Platinum Series, Downloadable | | |



Alpha Game Platform™ Progressive Jackpot Configuration Data

| Game Software Part Number | SMI Number | Game Name | Jackpot Category | Progressive Name | Description | Setup Screen Group |
|---------------------------|------------|--|------------------|--|--|--------------------|
| 31143-XX | | Triple Blazing 7's™ | N | Quick Hit Platinum Series | | |
| 300624X | | Wild Blue™ | N | Quick Hit Diamond Series, ONTR | | |
| 300623X | | Wild Red™ | N | Quick Hit Diamond Series, ONTR | | |
| 300609X | | Triple Blazing 7's™ | N | Quick Hit Platinum Series, ONTR | | |
| 300608X | | Black & White™ Sevens | N | Quick Hit Platinum Series, ONTR | | |
| 301353X | | Playboy Platinum | N | | | |
| 301602X | | Playboy Muy Caliente | N | | 5 Reels, 30 Lines, 600 Credits Max Bet | |
| AVGQDWR035DL-XX | | Wild Red™ | O | Quick Hit Diamond Series, Downloadable Version | 3 Reel | |
| AVGQDWB035DL-XX | | Wild Blue™ | O | Quick Hit Diamond Series, Downloadable Version | 3 Reel | |
| ASGQHBW31001-XX | | Black & White™ | O | Quick Hits™ 3 Reel Games (QH2) | 3 Reel | |
| ASGQHBG31001-XX | | Black Gold™ | O | Quick Hits™ 3 Reel Games (QH2) | 3 Reel | |
| ASGQHSB31001-XX | | Stars and Bars | O | Quick Hits™ 3 Reel Games (QH2) | 3 Reel | |
| ASGQHB731001-XX | | Triple Blazing 7s | O | Quick Hits™ 3 Reel Games (QH2) | 3 Reel | |
| 20389X | | Bonus Frenzy™ | P | Hot Shot Frenzy™ | | |
| 20405X | | Double Bonus Frenzy | P | Hot Shot Frenzy™ | | |
| 20406X | | Triple Bonus Frenzy | P | Hot Shot Frenzy™ | | |
| 20390X | | Fireball Frenzy™ | P | Hot Shot Frenzy™ | 4 Reels, 25 Lines, 1,250 Credits | |
| AVGSHDX01700-XX | | S & H Greenstamps ^(SM) Deluxe | Q | | | |
| ASGBTMS21702-XX | | Bonus Times Special™ | R | Hi Denomination | 3 Reel, 1 Line | |
| ASGBTMS11605-XX | | Bonus Times | R | | 3 Reel, 1 Line, 3 Credit | |
| 300242X | | Bonus Times (Old School) | R | | 3 Reel, 1 Line, 3 Credit | |
| ASGDBL7217UI-XX | | Double Blazing 7's™ | R | | 3 Reel, 1 Line, 3 Credit | |
| ASGDBL7417UI-XX | | Double Blazing 7's™ | R | | 3 Reel, 1 Line, 3 Credit | |
| 300139X | | Double Blazing 7's™ | R | | 3 Reel, 1 Line, 3 Credit | |
| ASGCSHWHL1LN-XX | | Ca\$h Wheel™ | R | | 3 Reel, 1 Line, 3 Credit | |
| ASGCASHWHL00-XX | | Ca\$h Wheel™ | R | | 3 Reel, 5 Line, 5 Credit | |
| ASGITM5117UI-XX | | In the Money™ | R | | 3 Reel, 1 Line, 3 Credit | |
| ASGISPAW1001-XX | | Instant Spin & Win | R | | 3 Reel, 1 Line, 3 Credit | |
| ASGDJB721702-XX | | Double Jackpot Triple Blazing 7's | R | | 3 Reel, 5 Line | |
| ASGDJB7317UI-XX | | Double Jackpot Triple Blazing 7's | R | | 3 Reel, 5 Line | |
| ASGMYSMW1001-XX | | Arabian Treasure™ | R | Treasure Series | 3 Reel, 5 Line, 5 Credit | |
| ASGBAWMW1001-XX | | Black & White™ | R | | 3 Reel, 5 Line, 5 Credit | |
| ASGBTMS317UI-XX | | Bonus Times | R | | 3 Reel, 5 Line, 5 Credit | |
| ASGBTMS017CL-XX | | Bonus Times | R | | 3 Reel, 5 Line, 5 Credit | |
| ASGCNTMW1001-XX | | Caribbean Treasures™ | R | Treasure Series | 3 Reel, 5 Line, 5 Credit | |
| ASGISPAW5L01-XX | | Instant Spin & Win | R | | 3 Reel, 5 Line, 5 Credit | |
| ASGMYTMW1001-XX | | Mayan Treasures™ | R | Treasure Series | 3 Reel, 5 Line, 5 Credit | |
| ASGBFZY117UI-XX | | Bonus Frenzy™ | R | | 4 Reel, 1 Line, 3 Credit | |
| AVGBJPG01700-XX * | J0042 | Multi-Play Blackjack | R | | 93.05% | |



Alpha Game Platform™ Progressive Jackpot Configuration Data

| Game Software Part Number | SMI Number | Game Name | Jackpot Category | Progressive Name | Description | Setup Screen Group |
|---------------------------|------------|------------------------------------|------------------|---------------------------|---------------------------|--------------------|
| 300298X * | J0042 | Multi-Play Blackjack | R | | 93.05% | |
| ASGMCRYL5LN0-XX | | Monte Carlo Royale | R | | 3 Reel, 5 Line, 5 Credit | |
| ASGMCRYLRD70-XX | | Red 7's | R | Monte Carlo Royale Series | | |
| ASGMCRYLRAF0-XX | | Rich & Famous™ | R | Monte Carlo Royale Series | | |
| 300380X | | Diamond Line Frenzy™ | R | (Old School) | 4 Reel, 1 Line, 3 Credit | |
| 300337X | | Rich & Famous™ | R | Monte Carlo Royale Series | 3 Reel, 1 Line, 3 Credit | |
| 300339X | | Double Jackpot Triple Fruit™ | R | | 3 Reel, 5 Line, 5 Credit | |
| 300340X | | Double Fruit™ | R | | 3 Reel, 1 Line, 3 Credit | |
| 300341X | | Wild Fruit™ | R | (Old School) | 3 Reel, 5 Line, 5 Credit | |
| 300442X | | Turbo Wild™ | R | | | |
| 300443X | | Double Dynamo 7's™ | R | | | |
| 300444X | | Double Jackpot Triple Electro 7's™ | R | | | |
| 300567X | | Double Jackpot Ninja Star™ | R | | | |
| 300566X | | Double Samurai™ | R | | | |
| 300702X | | Double Jackpot Triple Blazing 7's™ | R | | | |
| 300564X | | Emperor's Sword™ | R | | | |
| 300756X | | Silver & Gold™ | R | | 3 Reel, 1 Line, 3 Credit | |
| 300718X | | Bonus Times | R | (Old School) | 3 Reel, 1 Line, 3 Credit | |
| 300719X | | Black & White™ Double Jackpot | R | (Old School) | 3 Reel, 5 Line, 5 Credit | |
| 300743X | | Double Silver and Gold™ | R | (Old School) | 3 Reel, 1 Line, 3 Credit | |
| 301252X | | Double Jackpot Triple Blazing 7's™ | R | | 3 Reel, 5 Line, 5 Credit | |
| ASGB7RC01605-XX.BW7 | | Black & White™ Sevens | S | Reel Control Games | 3 Reel, 5 Line | |
| ASGB7RC01605-XX.L7 | | Lightning Sevens™ | S | Reel Control Games | 3 Reel, 5 Line | |
| ASGB7RC01605-XX.TB7 | | Triple Blazing 7's | S | Reel Control Games | 3 Reel, 5 Line | |
| ASGHTLN117UI-XX | | Hot Lines | S | | 3 Reel, 5 Line, 5 Credit | |
| ASGWTMS117UI-XX | | Winning Time\$™ | S | | 3 Reel, 5 Line, 5 Credit | |
| 300138X | | Winning Time\$™ | S | | | |
| 300137 | | Hot Lines | S | | | |
| AVGBJPG01700-XX * | J0046 | Multi-Play Blackjack | S | | 91.60% | |
| 300298X * | J0046 | Multi-Play Blackjack | S | | 91.60% | |
| ASGBL7321702-XX | | Blazing 7's™ | T | | 3 Reel, 1 Line | |
| ASGBL73317UI-XX | | Blazing 7's™ | T | | 3 Reel, 1 Line | |
| ASGB7SC017UI-XX | | Blazing 7's™ Scatter | T | | 3 Reel, 1 Line, 3 Credit | |
| ASGBL73217CL-XX | | Blazing 7's™ | T | | 3 Reel, 1 Line, 3 Credit | |
| 300215X | | Black & White™ | T | Quick Hit (Old School) | | |
| 300216X | | Blazing 7's™ | T | Quick Hit (Old School) | | |
| 300217X | | 5 & 10 Times | T | Quick Hit (Old School) | | |
| 300489X | | Flaming 7's™ | T | (Old School) | | |
| 300693X | | Black & White™ Double Jackpot | T | Quick Hit (Old School) | | |
| 300717X | | Double Jackpot Triple Blazing 7's | T | Quick Hit (Old School) | 3 Reel, 1 line, 2 Credits | |
| 300731X | | Blazing 7's™ | T | (Old School) | 3 Reel, 1 line, 3 Credits | |
| 300816X | | Double Jackpot Triple Blazing 7's™ | T | Quick Hit | 3 Reel, 1 line, 2 Credit | |
| 300842X | | Double Jackpot Black & White™ | T | Quick Hit (Old School) | 3 Reel, 1 line, 2 Credit | |
| 301095X | | 5 & 10 Times™ Pay | T | Quick Hit (Old School) | 3 Reel, 1 line, 2 Credits | |
| 301089X | | Black and White™ Double Jackpot | T | Quick Hit (Old School) | 3 Reel, 1 line, 2 Credits | |



Alpha Game Platform™ Progressive Jackpot Configuration Data

| Game Software Part Number | SMI Number | Game Name | Jackpot Category | Progressive Name | Description | Setup Screen Group |
|---------------------------|-------------|------------------------------------|------------------|-------------------------|---|--------------------|
| 300816X | | Double Jackpot Triple Blazing 7's™ | T | Quick Hit (Old School) | 3 Reel, 1 line, 2 Credits | |
| 300890X | | Bonus Blazing 7s™ | T | (Old School) | 3 Reel, 1 line, 3 Credits | |
| 301295X | | Wild Party | T | | 3 Reel, 1 line, 3 Credits | |
| 300746X | | 5X 10X Pay | T | Quick Hit | 3 Reel, 1 line, 2 Credits Max Bet | |
| 300758X | | 5X 10X Pay, Black Gold™ | T | Quick Hit | 3 Reel, 1 line, 2 Credits Max Bet | |
| 301224X | Y1975-Y1979 | Blazing 7's™ | T | | 3 Reel, 1 Line, 3 Credit Max Bet | |
| 301295X | | Wild Party | T | | 3 Reel, 1 Line, 3 Credit Max Bet | |
| 301411X | | King of Diamonds™ | T | | 3 Reels, 1 Line, 3 Credits Max Bet | |
| ASGBL7301001-XX | | Blazing 7's™ | U | | 3 Reel, 5 Line, 25 Credit | |
| B305026X | | Blazing 7's™ | U | Class II | 3 Reel, Stepper Reel | |
| AVGBLW700100-XX | | Black & White™ Sevens | V | | Video | |
| AVGBNS700100-XX | | Bonus Sevens™ | V | | Video | |
| AVGBLZ720100-XX | | Blazing 7's™ | V | | Video, Adj. Lines | |
| B520011X | | Blazing 7's™ | V | Class II | Video ONLY | |
| AVGOLSC10100-XX | | Old School | V | | 5 Reel, 20 Line, 60 Credit | |
| AVGOLSC101NJ-XX | | Old School | V | | 5 Reel, 20 Line, 60 Credit | |
| AVGOLSC101NT-XX | | Old School | V | | 5 Reel, 20 Line, 60 Credit | |
| ASGPPDW01702-XX | | Double Wild Rose | W | Power Progressive Games | | |
| ASGPPRF01702-XX | | Rich & Famous™ | W | Power Progressive Games | | |
| ASGPPWG01702-XX | | White Gold™ | W | Power Progressive Games | | |
| ASGRLMY01001-XX * | H0636 | Reel Money™ | X | | 5 Reel, 20 Line, 60 Credit, 5 Cent, 86.99% | |
| ASGRLMY21001-XX * | H1038 | Reel Money™ II | X | | 5 Reel, 20 Line, 60 Credit, 5 Cent, 87.00% | |
| ASGRLMY01001-XX * | H0634 | Reel Money™ | X | | 5 Reel, 30 Line, 150 Credit, 1 Cent, 87.00% | |
| ASGRLMY21001-XX * | H1036 | Reel Money™ II | X | | 5 Reel, 30 Line, 150 Credit, 1 Cent, 87.00% | |
| ASGRLMY01001-XX * | H0635 | Reel Money™ | X | | 5 Reel, 30 Line, 150 Credit, 2 Cent, 86.99% | |
| ASGRLMY21001-XX * | H1037 | Reel Money™ II | X | | 5 Reel, 30 Line, 150 Credit, 2 Cent, 86.99% | |
| ASGRLML01001-XX | | Reel Millions | Y | | | |
| AVGLOTT01700-XX | | Easy Lotto™ | Z | | | |

Double Letter Jackpot Categories

| Game Software Part Number | SMI Number | Game Name | Jackpot Category | Progressive Name | Description | Setup Screen Group |
|---------------------------|------------|----------------------|------------------|------------------|--------------------------|--------------------|
| AVGBJPG01700-XX * | J0041 | Multi-Play Blackjack | AA | | 91.84% | |
| 300298X * | J0041 | Multi-Play Blackjack | AA | | 91.84% | |
| ASGDMDV1NVUI-XX | | Diamonds & Devils™ | AA | | 3 Reel, 1 Line, 3 Credit | |
| ASGDBL7117UI-XX | | Double Blazing 7's | AA | | 3 Reel, 1 Line, 3 Credit | |
| ASGITM5217UI-XX | | In The Money | AA | | 3 Reel, 5 Line, 5 Credit | |
| 300276X | | Double Dragon | AA | (Old School) | | |



Alpha Game Platform™ Progressive Jackpot Configuration Data

| Game Software Part Number | SMI Number | Game Name | Jackpot Category | Progressive Name | Description | Setup Screen Group |
|---------------------------|------------|-----------------------------------|------------------|------------------------------|-------------------------------------|--------------------|
| 300136X | | Diamonds & Devils™ | AA | (Old School) | | |
| 300304X | | Black & White™ 5 x Pay | AA | (Old School) | | |
| 300498X | | Double Jackpot Triple Blazing 7's | AA | (Old School) | | |
| ASGSFBF017UI-XX | | Super Fireball Frenzy | BB | | 7 Reel, 50 Line | |
| ASGFRTN017UI-XX | | Fortune 8's™ | BB | | 7 Reel, 50 Line, 500 Credits | |
| ASGMGB701001-XX | | Blazing 7's™ 5 x Wild | BB | Blazing 7's™ Multi-slot | 5 Reel | |
| ASGMGB701001-XX | | Blazing 7's™, Free Games | BB | Blazing 7's™ Multi-slot | 5 Reel | |
| ASGMGB701001-XX | | Blazing 7's™, Scatter | BB | Blazing 7's™ Multi-slot | 5 Reel | |
| ASGMGBT02500-XX | | Bonus Times, Free Games | BB | Bonus Times Multi-slot | | |
| ASGMGBT02500-XX | | Bonus Times, Scatter | BB | Bonus Times Multi-slot | | |
| ASGMGBT02500-XX | | Bonus Times, Two Way | BB | Bonus Times Multi-slot | | |
| AVGGLBW017UI | | Golden Monkey Big Win | CC | | Video | |
| AVGGDTR017UI-XX * | Y1071 | Golden Treasure™ | CC | Monkey Series Games | 85.03% | High |
| AVGMGMK017UI-XX * | Y1083 | Magic Monkey™ | CC | Monkey Series Games | 85.03% | High |
| AVGMKFN017UI-XX * | Y1059 | Monkey's Fortune™ | CC | Monkey Series Games | 85.03% | High |
| ASGGLBW017UI-XX * | H1026 | Golden Monkey Big Win | CC | | 5 Reel, 25 Line, 125 Credit, 87.96% | High |
| AVGGDTR017UI-XX * | Y1072 | Golden Treasure™ | CC | Monkey Series Games | 87.97% | High |
| AVGMGMK017UI-XX * | Y1084 | Magic Monkey™ | CC | Monkey Series Games | 87.97% | High |
| AVGMKFN017UI-XX * | Y1060 | Monkey's Fortune™ | CC | Monkey Series Games | 87.97% | High |
| AVGGDTR017UI-XX * | Y1073 | Golden Treasure™ | CC | Monkey Series Games | 89.97% | High |
| AVGMGMK017UI-XX * | Y1085 | Magic Monkey™ | CC | Monkey Series Games | 89.97% | High |
| AVGMKFN017UI-XX * | Y1061 | Monkey's Fortune™ | CC | Monkey Series Games | 89.97% | High |
| ASGGLBW017UI-XX * | H1027 | Golden Monkey Big Win | CC | | 5 Reel, 25 Line, 125 Credit, 90.24% | High |
| ASGGLBW017UI-XX * | H1028 | Golden Monkey Big Win | CC | | 5 Reel, 25 Line, 125 Credit, 91.58% | High |
| AVGGDTR017UI-XX * | Y1074 | Golden Treasure™ | CC | Monkey Series Games | 92.07% | High |
| AVGMGMK017UI-XX * | Y1086 | Magic Monkey™ | CC | Monkey Series Games | 92.07% | High |
| AVGMKFN017UI-XX * | Y1062 | Monkey's Fortune™ | CC | Monkey Series Games | 92.07% | High |
| ASGGLBW017UI-XX * | H1029 | Golden Monkey Big Win | CC | | 5 Reel, 25 Line, 125 Credit, 93.80% | High |
| AVGGDTR017UI-XX * | Y1075 | Golden Treasure™ | CC | Monkey Series Games | 94.00% | High |
| AVGMGMK017UI-XX * | Y1087 | Magic Monkey™ | CC | Monkey Series Games | 94.00% | High |
| AVGMKFN017UI-XX * | Y1063 | Monkey's Fortune™ | CC | Monkey Series Games | 94.00% | High |
| ASGGLBW017UI-XX * | H1030 | Golden Monkey Big Win | CC | | 5 Reel, 25 Line, 125 Credit, 95.79% | High |
| AVGGDTR017UI-XX * | Y1076 | Golden Treasure™ | CC | Monkey Series Games | 95.96% | High |
| AVGMGMK017UI-XX * | Y1088 | Magic Monkey™ | CC | Monkey Series Games | 95.96% | High |
| AVGMKFN017UI-XX * | Y1064 | Monkey's Fortune™ | CC | Monkey Series Games | 95.96% | High |
| AVGGTDL017UI-XX * | Y1261 | Doubloon Lagoon™ | CC | Goldbeard's Treasure™ Series | 85.03% | High |
| AVGGTDL017UI-XX * | Y1262 | Doubloon Lagoon™ | CC | Goldbeard's Treasure™ Series | 87.97% | High |
| AVGGTDL017UI-XX * | Y1263 | Doubloon Lagoon™ | CC | Goldbeard's Treasure™ Series | 89.97% | High |
| AVGGTDL017UI-XX * | Y1264 | Doubloon Lagoon™ | CC | Goldbeard's Treasure™ Series | 92.07% | High |
| AVGGTDL017UI-XX * | Y1265 | Doubloon Lagoon™ | CC | Goldbeard's Treasure™ Series | 94.00% | High |
| AVGGTDL017UI-XX * | Y1266 | Doubloon Lagoon™ | CC | Goldbeard's Treasure™ Series | 95.96% | High |
| AVGGTMT017UI-XX * | Y1249 | Mermaid's Treasure™ | CC | Goldbeard's Treasure™ Series | 85.03% | High |



Alpha Game Platform™ Progressive Jackpot Configuration Data

| Game Software Part Number | SMI Number | Game Name | Jackpot Category | Progressive Name | Description | Setup Screen Group |
|---------------------------|------------|--------------------------|------------------|------------------------------|--|--------------------|
| AVGGTMT017UI-XX * | Y1250 | Mermaid's Treasure™ | CC | Goldbeard's Treasure™ Series | 87.97% | High |
| AVGGTMT017UI-XX * | Y1251 | Mermaid's Treasure™ | CC | Goldbeard's Treasure™ Series | 89.97% | High |
| AVGGTMT017UI-XX * | Y1252 | Mermaid's Treasure™ | CC | Goldbeard's Treasure™ Series | 92.07% | High |
| AVGGTMT017UI-XX * | Y1253 | Mermaid's Treasure™ | CC | Goldbeard's Treasure™ Series | 94.00% | High |
| AVGGTMT017UI-XX * | Y1254 | Mermaid's Treasure™ | CC | Goldbeard's Treasure™ Series | 95.96% | High |
| AVGGTPB017UI-XX * | Y1237 | Pirate Beach™ | CC | Goldbeard's Treasure™ Series | 85.03% | High |
| AVGGTPB017UI-XX * | Y1238 | Pirate Beach™ | CC | Goldbeard's Treasure™ Series | 87.97% | High |
| AVGGTPB017UI-XX * | Y1239 | Pirate Beach™ | CC | Goldbeard's Treasure™ Series | 89.97% | High |
| AVGGTPB017UI-XX * | Y1240 | Pirate Beach™ | CC | Goldbeard's Treasure™ Series | 92.07% | High |
| AVGGTPB017UI-XX * | Y1241 | Pirate Beach™ | CC | Goldbeard's Treasure™ Series | 94.00% | High |
| AVGGTPB017UI-XX * | Y1242 | Pirate Beach™ | CC | Goldbeard's Treasure™ Series | 95.96% | High |
| ASGGLBW017UI-XX * | H1031 | Golden Monkey Big Win | DD | | 5 Reel, 9 Line, 45 Credit, 88.08% | |
| ASGGLBW017UI-XX * | H1032 | Golden Monkey Big Win | DD | | 5 Reel, 9 Line, 45 Credit, 90.35% | |
| ASGGLBW017UI-XX * | H1033 | Golden Monkey Big Win | DD | | 5 Reel, 9 Line, 45 Credit, 91.70% | |
| ASGGLBW017UI-XX * | H1034 | Golden Monkey Big Win | DD | | 5 Reel, 9 Line, 45 Credit, 93.91% | |
| ASGGLBW017UI-XX * | H1035 | Golden Monkey Big Win | DD | | 5 Reel, 9 Line, 45 Credit, 95.91% | |
| ASGTOPR017UI-XX | | Tower of Power™ | EE | | 5 Reel, 25 Line, 250 Credit | |
| 26294-XX | | Tower of Power™ | EE | | | |
| ASGISPAWMAP1-XX * | H0672 | Spin & Win | FF | | 3 Reel, 1 Line, 3 Credit, \$5.00 Denomination, 94.00% | |
| ASGISPAWMAP1-XX * | H0671 | Spin & Win | FF | | 3 Reel, 1 Line, 3 Credit, \$1.00 Denomination, 92.00% | |
| ASGISPAWMAP1-XX * | H0959 | Spin & Win | FF | | 3 Reel, 5 Line, 5 Credit, 25 Cent Denomination, 88.03% | |
| SGISPAWMAP1-XX * | H0998 | Spin & Win | FF | | 3 Reel, 5 Line, 5 Credit, 25 Cent Denomination, 90.00% | |
| ASGRLWNRMPRLR-XX * | H0864 | Reel Winners™ Multiplier | GG | | 5 Reel, 20 Line, 150 Credit, 85.33% | A |
| ASGRLWNRMPRLR-XX * | H0841 | Reel Winners™ Multiplier | GG | | 5 Reel, 20 Line, 150 Credit, 88.32% | A |
| ASGRLWNRMPRLR-XX * | H0842 | Reel Winners™ Multiplier | GG | | 5 Reel, 20 Line, 150 Credit, 90.32% | A |
| ASGRLWNRMPRLR-XX * | H0843 | Reel Winners™ Multiplier | GG | | 5 Reel, 20 Line, 150 Credit, 92.33% | A |
| ASGRLWNRMPRLR-XX * | H0844 | Reel Winners™ Multiplier | GG | | 5 Reel, 20 Line, 150 Credit, 94.32% | A |
| ASGRLWNRMPRLR-XX * | H0845 | Reel Winners™ Multiplier | GG | | 5 Reel, 20 Line, 150 Credit, 96.33% | A |
| B520063X | | Reel Winners™ | GG | Class II | Stepper Reel 300 Max Bet | |



Alpha Game Platform™ Progressive Jackpot Configuration Data

| Game Software Part Number | SMI Number | Game Name | Jackpot Category | Progressive Name | Description | Setup Screen Group |
|---------------------------|------------|--------------------------|------------------|------------------------|--|--------------------|
| 301251X | | Money Talks™ | GG | | 3 Reels, 27 Lines, 400 Credits Max Bet | B |
| B520063X | | Reel Winners™ | HH | Class II | Stepper Reel 150 Max Bet | |
| ASGRLWNRMPRLR-XX * | H0863 | Reel Winners™ Multiplier | HH | | 5 Reel, 5 Line, 50 Credit, 85.42% | B |
| ASGRLWNRMPRLR-XX * | H0836 | Reel Winners™ Multiplier | HH | | 5 Reel, 5 Line, 50 Credit, 88.26% | B |
| ASGRLWNRMPRLR-XX * | H0837 | Reel Winners™ Multiplier | HH | | 5 Reel, 5 Line, 50 Credit, 90.26% | B |
| ASGRLWNRMPRLR-XX * | H0838 | Reel Winners™ Multiplier | HH | | 5 Reel, 5 Line, 50 Credit, 92.26% | B |
| ASGRLWNRMPRLR-XX * | H0839 | Reel Winners™ Multiplier | HH | | 5 Reel, 5 Line, 50 Credit, 94.26% | B |
| ASGRLWNRMPRLR-XX * | H0840 | Reel Winners™ Multiplier | HH | | 5 Reel, 5 Line, 50 Credit, 96.26% | B |
| 300796X | | Hot Spin™ | HH | | 3 Reel, 27 Line, 200 Credit | |
| 301251X | | Money Talks™ | HH | | 3 Reels, 27 Lines, 200 Credits Max Bet | A |
| AVGBJPG01700-XX * | J0043 | Multi-Play Blackjack | II | | 94.26% | |
| 300298X * | J0043 | Multi-Play Blackjack | II | | 94.26% | |
| AVGBJPG01700-XX * | J0045 | Multi-Play Blackjack | JJ | | 96.68% | |
| 300298X * | J0045 | Multi-Play Blackjack | JJ | | 96.68% | |
| AVGCW24017UI-XX | | 24 Karat™ | KK | Classic Winners Series | | |
| AVGCWBV017UI-XX | | Black Velvet Sevens | KK | Classic Winners Series | | |
| AVGCWB7017UI-XX | | Bonus 7s™ | KK | Classic Winners Series | | |
| AVGPSG8017UI-XX * | Y1185 | Golden 8's™ | LL | Power Strike™ Series | 85.03% | F |
| AVGPSR7017UI-XX * | Y1036 | Royal Sevens™ | LL | Power Strike™ Series | 85.03% | F |
| AVGPSGC017UI-XX * | Y1100 | Golden Crown™ | LL | Power Strike™ Series | 85.05% | F |
| AVGPSG8017UI-XX * | Y1179 | Golden 8's™ | LL | Power Strike™ Series | 88.02% | F |
| AVGPSR7017UI-XX * | Y0953 | Royal Sevens™ | LL | Power Strike™ Series | 88.02% | F |
| AVGPSGC017UI-XX * | Y1094 | Golden Crown™ | LL | Power Strike™ Series | 88.09% | F |
| 300631X * | Y1179 | Golden 8's™ | LL | Power Strike™ Series | 88.02% | F |
| 300631X * | Y1185 | Golden 8's™ | LL | Power Strike™ Series | 85.03% | F |
| 300632X * | Y0953 | Royal Sevens™ | LL | Power Strike™ Series | 88.02% | F |
| 300632X * | Y1036 | Royal Sevens™ | LL | Power Strike™ Series | 85.03% | F |
| 300633X * | Y1094 | Golden Crown™ | LL | Power Strike™ Series | 88.09% | F |
| 300633X * | Y1100 | Golden Crown™ | LL | Power Strike™ Series | 85.05% | F |
| 301069X | Y1907 | Dragon Wonder™ | LL | Power Strike™ Series | 88.06% | F |
| 301069X | Y2044 | Dragon Wonder™ | LL | Power Strike™ Series | 85.01% | F |
| 301073X | Y1913 | Ramses Gold™ | LL | Power Strike™ Series | 88.06% | F |
| 301073X | Y2050 | Ramses Gold™ | LL | Power Strike™ Series | 85.01% | F |
| AVGPSGC017UI-XX * | Y1099 | Golden Crown™ | MM | Power Strike™ Series | 85.05% | E |
| AVGPSG8017UI-XX * | Y1184 | Golden 8's™ | MM | Power Strike™ Series | 85.08% | E |
| AVGPSR7017UI-XX * | Y1035 | Royal Sevens™ | MM | Power Strike™ Series | 85.08% | E |
| AVGPSG8017UI-XX * | Y1178 | Golden 8's™ | MM | Power Strike™ Series | 87.98% | E |
| AVGPSR7017UI-XX * | Y0952 | Royal Sevens™ | MM | Power Strike™ Series | 87.98% | E |
| AVGPSGC017UI-XX * | Y1093 | Golden Crown™ | MM | Power Strike™ Series | 88.00% | E |
| 300631X * | Y1178 | Golden 8's™ | MM | Power Strike™ Series | 87.98% | E |
| 300631X * | Y1184 | Golden 8's™ | MM | Power Strike™ Series | 85.08% | E |



Alpha Game Platform™ Progressive Jackpot Configuration Data

| Game Software Part Number | SMI Number | Game Name | Jackpot Category | Progressive Name | Description | Setup Screen Group |
|---------------------------|------------|----------------|------------------|----------------------|-------------|--------------------|
| 300632X* | Y0952 | Royal Sevens™ | MM | Power Strike™ Series | 87.98% | E |
| 300632X* | Y1035 | Royal Sevens™ | MM | Power Strike™ Series | 85.08% | E |
| 300633X* | Y1093 | Golden Crown™ | MM | Power Strike™ Series | 88.00% | E |
| 300633X* | Y1099 | Golden Crown™ | MM | Power Strike™ Series | 85.05% | E |
| 301069X | Y1906 | Dragon Wonder™ | MM | Power Strike™ Series | 88.02% | E |
| 301069X | Y2043 | Dragon Wonder™ | MM | Power Strike™ Series | 85.04% | E |
| 301073X | Y1912 | Ramses Gold™ | MM | Power Strike™ Series | 88.02% | E |
| 301073X | Y2049 | Ramses Gold™ | MM | Power Strike™ Series | 85.04% | E |
| AVGPSGC017UI-XX* | Y1098 | Golden Crown™ | NN | Power Strike™ Series | 85.00% | D |
| AVGPSG8017UI-XX* | Y1183 | Golden 8's™ | NN | Power Strike™ Series | 85.01% | D |
| AVGPSR7017UI-XX* | Y1034 | Royal Sevens™ | NN | Power Strike™ Series | 85.01% | D |
| AVGPSGC017UI-XX* | Y1092 | Golden Crown™ | NN | Power Strike™ Series | 88.05% | D |
| AVGPSG8017UI-XX* | Y1177 | Golden 8's™ | NN | Power Strike™ Series | 88.08% | D |
| AVGPSR7017UI-XX* | Y0951 | Royal Sevens™ | NN | Power Strike™ Series | 88.08% | D |
| 300631X* | Y1177 | Golden 8's™ | NN | Power Strike™ Series | 88.08% | D |
| 300631X* | Y1183 | Golden 8's™ | NN | Power Strike™ Series | 85.01% | D |
| 300632X* | Y0951 | Royal Sevens™ | NN | Power Strike™ Series | 88.08% | D |
| 300632X* | Y1034 | Royal Sevens™ | NN | Power Strike™ Series | 85.01% | D |
| 300633X* | Y1092 | Golden Crown™ | NN | Power Strike™ Series | 88.05% | D |
| 300633X* | Y1098 | Golden Crown™ | NN | Power Strike™ Series | 85.00% | D |
| 301069X | Y1905 | Dragon Wonder™ | NN | Power Strike™ Series | 87.98% | D |
| 301069X | Y2042 | Dragon Wonder™ | NN | Power Strike™ Series | 85.04% | D |
| 301073X | Y1911 | Ramses Gold™ | NN | Power Strike™ Series | 87.98% | D |
| 301073X | Y2048 | Ramses Gold™ | NN | Power Strike™ Series | 85.04% | D |
| AVGPSG8017UI-XX* | Y1182 | Golden 8's™ | OO | Power Strike™ Series | 84.96% | C |
| AVGPSR7017UI-XX* | Y1033 | Royal Sevens™ | OO | Power Strike™ Series | 84.96% | C |
| AVGPSGC017UI-XX* | Y1097 | Golden Crown™ | OO | Power Strike™ Series | 85.07% | C |
| AVGPSGC017UI-XX* | Y1091 | Golden Crown™ | OO | Power Strike™ Series | 87.99% | C |
| AVGPSG8017UI-XX* | Y1176 | Golden 8's™ | OO | Power Strike™ Series | 88.01% | C |
| AVGPSR7017UI-XX* | Y0950 | Royal Sevens™ | OO | Power Strike™ Series | 88.01% | C |
| 300631X* | Y1176 | Golden 8's™ | OO | Power Strike™ Series | 88.01% | C |
| 300631X* | Y1182 | Golden 8's™ | OO | Power Strike™ Series | 84.96% | C |
| 300632X* | Y0950 | Royal Sevens™ | OO | Power Strike™ Series | 88.01% | C |
| 300632X* | Y1033 | Royal Sevens™ | OO | Power Strike™ Series | 84.96% | C |
| 300633X* | Y1091 | Golden Crown™ | OO | Power Strike™ Series | 87.99% | C |
| 300633X* | Y1097 | Golden Crown™ | OO | Power Strike™ Series | 85.07% | C |
| 301069X | Y1904 | Dragon Wonder™ | OO | Power Strike™ Series | 88.03% | C |
| 301069X | Y2041 | Dragon Wonder™ | OO | Power Strike™ Series | 85.08% | C |
| 301073X | Y1910 | Ramses Gold™ | OO | Power Strike™ Series | 88.03% | C |
| 301073X | Y2047 | Ramses Gold™ | OO | Power Strike™ Series | 85.08% | C |
| AVGPSG8017UI-XX* | Y1181 | Golden 8's™ | PP | Power Strike™ Series | 84.94% | B |
| AVGPSR7017UI-XX* | Y1032 | Royal Sevens™ | PP | Power Strike™ Series | 84.94% | B |
| AVGPSGC017UI-XX* | Y1096 | Golden Crown™ | PP | Power Strike™ Series | 85.08% | B |
| AVGPSG8017UI-XX* | Y1175 | Golden 8's™ | PP | Power Strike™ Series | 87.95% | B |
| AVGPSR7017UI-XX* | Y0949 | Royal Sevens™ | PP | Power Strike™ Series | 87.95% | B |
| AVGPSGC017UI-XX* | Y1090 | Golden Crown™ | PP | Power Strike™ Series | 88.07% | B |



Alpha Game Platform™ Progressive Jackpot Configuration Data

| Game Software Part Number | SMI Number | Game Name | Jackpot Category | Progressive Name | Description | Setup Screen Group |
|---------------------------|------------|----------------------------|------------------|-----------------------------------|------------------------------------|--------------------|
| 300631X* | Y1175 | Golden 8's™ | PP | Power Strike™ Series | 87.95% | B |
| 300631X* | Y1181 | Golden 8's™ | PP | Power Strike™ Series | 84.94% | B |
| 300632X* | Y0949 | Royal Sevens™ | PP | Power Strike™ Series | 87.95% | B |
| 300632X* | Y1032 | Royal Sevens™ | PP | Power Strike™ Series | 84.94% | B |
| 300633X* | Y1090 | Golden Crown™ | PP | Power Strike™ Series | 88.07% | B |
| 300633X* | Y1096 | Golden Crown™ | PP | Power Strike™ Series | 85.08% | B |
| 301069X | Y1903 | Dragon Wonder™ | PP | Power Strike™ Series | 87.98% | B |
| 301069X | Y2040 | Dragon Wonder™ | PP | Power Strike™ Series | 85.06% | B |
| 301073X | Y1909 | Ramses Gold™ | PP | Power Strike™ Series | 87.98% | B |
| 301073X | Y2046 | Ramses Gold™ | PP | Power Strike™ Series | 85.06% | B |
| AVGPSGC017UI-XX* | Y1095 | Golden Crown™ | QQ | Power Strike™ Series | 85.02% | A |
| AVGPSG8017UI-XX* | Y1180 | Golden 8's™ | QQ | Power Strike™ Series | 85.08% | A |
| AVGPSR7017UI-XX* | Y1031 | Royal Sevens™ | QQ | Power Strike™ Series | 85.08% | A |
| AVGPSG8017UI-XX* | Y1174 | Golden 8's™ | QQ | Power Strike™ Series | 87.95% | A |
| AVGPSR7017UI-XX* | Y0948 | Royal Sevens™ | QQ | Power Strike™ Series | 87.95% | A |
| AVGPSGC017UI-XX* | Y1089 | Golden Crown™ | QQ | Power Strike™ Series | 88.04% | A |
| AVGPSGC026MC-XX* | Y1441 | Golden Crown™ | QQ | Power Strike™ Series | 88.32% Merchandise Single SMI Only | |
| AVGPSG8026MC-XX* | Y1442 | Golden 8's™ | QQ | Power Strike™ Series | 88.28% Merchandise Single SMI Only | |
| AVGPSR7026MC-XX* | Y1443 | Royal Sevens™ | QQ | Power Strike™ Series | 88.28% Merchandise Single SMI Only | |
| 300631X* | Y1174 | Golden 8's™ | QQ | Power Strike™ Series | 87.95% | A |
| 300631X* | Y1180 | Golden 8's™ | QQ | Power Strike™ Series | 85.08% | A |
| 300632X* | Y0948 | Royal Sevens™ | QQ | Power Strike™ Series | 87.95% | A |
| 300632X* | Y1031 | Royal Sevens™ | QQ | Power Strike™ Series | 85.08% | A |
| 300633X* | Y1089 | Golden Crown™ | QQ | Power Strike™ Series | 88.04% | A |
| 300633X* | Y1095 | Golden Crown™ | QQ | Power Strike™ Series | 85.02% | A |
| 301069X | Y1902 | Dragon Wonder™ | QQ | Power Strike™ Series | 88.00% | A |
| 301069X | Y2039 | Dragon Wonder™ | QQ | Power Strike™ Series | 85.07% | A |
| 301073X | Y1908 | Ramses Gold™ | QQ | Power Strike™ Series | 88.00% | A |
| 301073X | Y2045 | Ramses Gold™ | QQ | Power Strike™ Series | 85.07% | A |
| B520068X | | Ultimate Diamonds & Sevens | RR | Instant Spin, Class II | | |
| B520070X | | Ultimate Dragon Spin | RR | Instant Spin, Class II | | |
| B520069X | | Ultimate Party Spin™ | RR | Instant Spin, Class II | | |
| 300520X | | 77777 Jackpot | SS | | | |
| 20544X | | 77777 Jackpot | SS | | | |
| 300543X | | Blazing Hot Double Jackpot | SS | | | |
| 300957X | | Money Vault™ | SS | NAP | 5 Reel, 40 Line, 200 Credit | |
| 300959X | | Golden Pharaoh™ | SS | | 5 Reel, 40 Line, 200 Credit | |
| AVGPPWG017UI-XX | | White Gold™ | TT | Platinum Power Progressive Series | | |
| AVGPPDR017UI-XX | | Wild Double Rose | TT | Platinum Power Progressive Series | | |
| AVGPPRF017UI-XX | | Rich & Famous™ | TT | Platinum Power Progressive Series | | |
| ASGPPWW017UI-XX | | Wild Winners™ | UU | Power Progressive Series | | |
| ASGPPWL117UI-XX | | White Lightning™ | UU | Power Progressive Series | | |
| ASGPPDD017UI-XX | | Double Dynamite | UU | Power Progressive Series | | |
| ASGPPDW11702-XX | | Double Wild Rose | UU | Power Progressive Series | | |



Alpha Game Platform™ Progressive Jackpot Configuration Data

| Game Software Part Number | SMI Number | Game Name | Jackpot Category | Progressive Name | Description | Setup Screen Group |
|---------------------------|------------|-----------------------|------------------|-----------------------------------|---------------------------------------|--------------------|
| ASGPPFT01702-XX | | Five & Ten Times | UU | Power Progressive Series | | |
| ASGPPRF11702-XX | | Rich & Famous™ | UU | Power Progressive Series | | |
| 300228X | | Double Dynamite™ | UU | Power Progressive Games, Class II | | |
| 300229X | | Wild Winners™ | UU | Power Progressive Games, Class II | | |
| 300230X | | White Lightning™ | UU | Power Progressive Games, Class II | | |
| 20556X | | Fireball™ | V V | | 5 Reel, 40 Line, 2,000 Credit Max Bet | |
| 28319X | | Fireball™ | V V | | | |
| 300538X | | Fireball™ | V V | | 5 Reel, 40 Line, 2,000 Credit Max Bet | |
| B540003X | | Fireball™ | V V | Class II | 5 Reel, 40 Line, 200 Credit | |
| AVGSJFF017UI-XX | | Firecracker™ | W W | Super Reel Jackpots Series | 7 Reel, 50 Line, 150 Credit Max Bet | |
| AVGSJDR017UI-XX | | Diamonds & Roses™ | W W | Super Reel Jackpots Series | 7 Reel, 50 Line, 150 Credit Max Bet | |
| AVGSJSG017UI-XX | | Silver & Gold™ | W W | Super Reel Jackpots Series | 7 Reel, 50 Line, 150 Credit Max Bet | |
| B520027X | | Copper Cash™ | YY | Class II | Video | |
| B520028X | | Copper Dropper™ | YY | Class II | Video | |
| B515004X | | Black & White™ Sevens | ZZ | Class II | Video | |

Triple Letter Jackpot Categories

| Game Software Part Number | SMI Number | Game Name | Jackpot Category | Progressive Name | Description | Setup Screen Group |
|---------------------------|------------|-------------------------|------------------|------------------|-------------------------------------|--------------------|
| B515003X | | Bonus Sevens™ | AAA | Class II | Video ONLY | |
| B520023X | | Winning Times™ | BBB | Class II | Stepper Reel or Video | |
| B520043X | | Money Money | CCC | Class II | Stepper Reel or Video | |
| ASG3TWL017UI-XX | | 3 Times Wild!™ | CCC | | | |
| ASGFTTW017UI-XX | | Five & Ten Times Wild!™ | CCC | | | |
| ASGDJWL017UI-XX | | Double Jackpot Wild™ | CCC | | | |
| 300781X | | Double Diablo | CCC | | | |
| 300782X | | Double Joker | CCC | | | |
| B520025X | | In The Money | DDD | Class II | Stepper Reel | |
| 300932X | | Hot Hot Habanero | DDD | | 5 Reel, 30 Line, 150 Credit Max Bet | |
| 300933X | | Hot Hot Habanero | DDD | | 5 Reel, 30 Line, 300 Credit Max Bet | |
| 301037X | | Gauche's Gold™ | DDD | | 5 Reel, 30 Line, 150 Credit Max Bet | |
| 301038X | | Gauche's Gold™ | DDD | | 5 Reel, 30 Line, 300 Credit Max Bet | |
| 301083X | | Fort Wild™ | DDD | | | |
| 301084X | | Flippin Wild™ | DDD | | 4 Games, 5 Reel, 500 Credit Max | |



Alpha Game Platform™ Progressive Jackpot Configuration Data

| Game Software Part Number | SMI Number | Game Name | Jackpot Category | Progressive Name | Description | Setup Screen Group |
|---------------------------|------------|----------------------------------|------------------|-------------------------------------|--|--------------------|
| 301004X | | Alice and the Scattered Hearts™ | DDD | | 5 Reel, 1,024 ways, 200 Credit Max Bet | |
| 301161X | | Alice and the Scattered Hearts™ | DDD | | 5 Reel, 1,024 ways, 400 Credit Max Bet | |
| 301135X | | String of Pearls™ | DDD | | 5 Reel, 30 Line, 200 or 400 Credit Max Bet | |
| 301198X | | Hidden Paradise™ | DDD | Ancient Mysteries | 5 Reel, 30 Line, 200 Credit Max Bet | |
| 301195X | | Temple of Mystery™ | DDD | Ancient Mysteries | 5 Reel, 30 Line, 200 Credit Max Bet | |
| 301060X | | Hidden Paradise™ | DDD | Ancient Mysteries | 5 Reel, 30 Line, 200 Credit Max Bet | |
| 301059X | | Temple of Mystery™ | DDD | Ancient Mysteries | 5 Reel, 30 Line, 200 Credit Max Bet | |
| 301260X | | Cash Cruise™ | DDD | | 5 Reels, 25 Lines, 500 Credits Max Bet | |
| 301259X | | Cash Eclipse™ | DDD | | 5 Reels, 25 Lines, 500 Credits Max Bet | |
| 301442X | | Radiant Riches™ | DDD | | 5 Reels, 30 Lines, 400 Credits Max Bet | |
| B305027X | | Double Jackpot Triple Blazing 7s | EEE | Quick Hits™, Class II | 3 Reel, Stepper Reel or Video | |
| B305029X | | Black Gold™ | EEE | Quick Hits™, Class II | 3 Reel, Stepper Reel or Video | |
| B305030X | | Stars & Bars | EEE | Quick Hits™, Class II | 3 Reel, Stepper Reel or Video | |
| B305031X | | Black & White™ Double Jackpot | EEE | Quick Hits™, Class II | 3 Reel, Stepper Reel or Video | |
| B505004X | | 2 nd Chance™ Sevens | FFF | Class II | Stepper Reel or Video | |
| B520066X | | 2 nd Chance™ Sevens | FFF | Class II | Stepper Reel or Video | |
| B520052X | | 1000 Degrees | GGG | 1,000,000 Degrees™ Series, Class II | Stepper Reel or Video \$0.05 (Nickel) Denomination Only, 60 Max Bet Only | |
| B520057X | | Black Gold™ Wild | GGG | 1,000,000 Degrees™ Series, Class II | Stepper Reel or Video \$0.05 (Nickel) Denomination Only, 60 Max Bet Only | |
| B520058X | | Wild Jackpot Black & White™ | GGG | 1,000,000 Degrees™ Series, Class II | Stepper Reel or Video \$0.05 (Nickel) Denomination Only, 60 Max Bet Only | |
| B520059X | | Wild Jackpot Triple Blazing 7s | GGG | 1,000,000 Degrees™ Series, Class II | Stepper Reel or Video \$0.05 (Nickel) Denomination Only, 60 Max Bet Only | |
| 300161X | | 1000 Degrees | GGG | 1,000,000 Degrees™ Series, Class II | Stepper Reel \$0.05 (Nickel) Denomination Only, 60 Max Bet Only | |



Alpha Game Platform™ Progressive Jackpot Configuration Data

| Game Software Part Number | SMI Number | Game Name | Jackpot Category | Progressive Name | Description | Setup Screen Group |
|---------------------------|------------|--------------------------------|------------------|-------------------------------------|--|--------------------|
| 300162X | | Black Gold™ Wild | GGG | 1,000,000 Degrees™ Series, Class II | Stepper Reel \$0.05 (Nickel) Denomination Only, 60 Max Bet Only | |
| 300163X | | Wild Jackpot Black & White™ | GGG | 1,000,000 Degrees™ Series, Class II | Stepper Reel \$0.05 (Nickel) Denomination Only, 60 Max Bet Only | |
| 300164X | | Wild Jackpot Triple Blazing 7s | GGG | 1,000,000 Degrees™ Series, Class II | Stepper Reel \$0.05 (Nickel) Denomination Only, 60 Max Bet Only | |
| B520015X | | Tower of Power™ | HHH | Class II | Stepper Reel or Video | |
| B530004X | | Tower of Cash | III | Class II | Stepper Reel or Video | |
| BP00003X | | Double Double Bonus Poker | JJJ | Class II | Video | |
| ASGLGHREL0UI-XX | | Lightning Reels | LLL | Power Max Reels Series | 5 Reel, 5 Line, 75 Credit Max Bet | |
| ASGRELFIREUI-XX | | Reel Fire | LLL | Power Max Reels Series | 5 Reel, 5 Line, 75 Credit Max Bet | |
| ASGGLMK117UI I-XX * | H0846 | Golden Monkey™ | MMM | International | 5 Reel, 9 Line, 45 Credits, 88.20% | |
| ASGGLMK117UI I-XX * | H0847 | Golden Monkey™ | MMM | International | 5 Reel, 9 Line, 45 Credits, 90.42% | |
| ASGGLMK117UI I-XX * | H0848 | Golden Monkey™ | MMM | International | 5 Reel, 9 Line, 45 Credits, 91.82% | |
| ASGGLMK117UI I-XX * | H0849 | Golden Monkey™ | MMM | International | 5 Reel, 9 Line, 45 Credits, 94.03% | |
| ASGGLMK117UI I-XX * | H0850 | Golden Monkey™ | MMM | International | 5 Reel, 9 Line, 45 Credits, 96.03% | |
| 300362X * | H0846 | Golden Monkey™ | MMM | International | 5 Reel, 9 Line, 45 Credits, 88.20% | |
| 300362X * | H0847 | Golden Monkey™ | MMM | International | 5 Reel, 9 Line, 45 Credits, 90.42% | |
| 300362X * | H0848 | Golden Monkey™ | MMM | International | 5 Reel, 9 Line, 45 Credits, 91.82% | |
| 300362X * | H0849 | Golden Monkey™ | MMM | International | 5 Reel, 9 Line, 45 Credits, 94.03% | |
| 300362X * | H0850 | Golden Monkey™ | MMM | International | 5 Reel, 9 Line, 45 Credits, 96.03% | |
| AVGCBMG02500-00 | | Cash Burst™ Original | NNN | Cash Burst™ Multi-Game Series | | |
| AVGCBMG02500-00 | | Cash Burst™ Super Wild | NNN | Cash Burst™ Multi-Game Series | | |
| AVGCBMG02500-00 | | Cash Burst™ Triple Match | NNN | Cash Burst™ Multi-Game Series | | |
| AVGUTOP026NV-XX | | Ultimate Tower of Power™ | OOO | WAP | 5 Reel, 30 Line | |
| AVGUTOP026NL-XX | | Ultimate Tower of Power™ | OOO | NAL | | |
| AVGASTR02600-XX | | Asian Treasures | PPP | Super Jackpot Scatter™ Series | | |
| AVGILWN02600-XX | | Island Wins™ | PPP | Super Jackpot Scatter™ Series | | |



Alpha Game Platform™ Progressive Jackpot Configuration Data

| Game Software Part Number | SMI Number | Game Name | Jackpot Category | Progressive Name | Description | Setup Screen Group |
|---------------------------|------------|------------------------------------|------------------|-------------------------------------|--|--------------------|
| 300147X | | Golden Fleece™ | PPP | Super Jackpot Scatter™ Series | | |
| 300146X | | Persian Empire™ | PPP | Super Jackpot Scatter™ Series | | |
| 300547X | | Persian Empire™ | PPP | Super Jackpot Scatter™ Series | | |
| ATGDRDY02600-XX | | Dragon Dynasty | QQQ | | Transparent Reels | |
| ATGTWTG02600-XX | | Twin Tigers™ | QQQ | | Transparent Reels | |
| ATGSKSP02600-XX | | Sky Spirits™ | QQQ | | Transparent Reels | |
| 20606X | | Instant Fortune™ | RRR | | 5 Reel, 40 Line, 200 Credits | |
| 20658X | | Instant Fortune™ | RRR | NAL | 5 Reel, 40 Line, 200 Credits | |
| 20409X | | Instant Fortune™ | RRR | | 7 Reel, 40 Line, 200 Credits | |
| 20659X | | Instant Fortune™ | RRR | NAL | 7 Reel, 40 Line, 200 Credits | |
| 300161X | | 1000 Degrees | SSS | 1,000,000 Degrees™ Series, Class II | \$0.01 (Penny) Denomination Only, 200 Max Bet Only. | |
| 300162X | | Black Gold™ Wild | SSS | 1,000,000 Degrees™ Series, Class II | \$0.01 (Penny) Denomination Only, 200 Max Bet Only. | |
| 300163X | | Wild Jackpot Black & White™ | SSS | 1,000,000 Degrees™ Series, Class II | \$0.01 (Penny) Denomination Only, 200 Max Bet Only. | |
| 300164X | | Wild Jackpot Triple Blazing 7s | SSS | 1,000,000 Degrees™ Series, Class II | \$0.01 (Penny) Denomination Only, 200 Max Bet Only. | |
| AVGRMSC017UI-XX | | Reel Money™ Scatter | TTT | | | |
| 300729X | | Golden Wheels™ Scatter | TTT | | | |
| 300565-XX | | Golden Wheels™ Scatter | TTT | | | |
| 300445X | | Reel Money™ Scatter | TTT | Class II | 5 Reel, 200 Max Credit | |
| 20558X | | Big Apple Bonanza | UUU | World Traveler Series | | |
| 20588X | | Thames Treasures | UUU | World Traveler Series | | |
| 20589X | | Venice Romance | UUU | World Traveler Series | | |
| 20590X | | Japanese Express | UUU | World Traveler Series | | |
| 300280X | | Blazing 7's™ | V V V | (Old School) | | |
| 300289X | | Blazing Dollars | W W W | (Old School) | | |
| 301316X | | Cash Spin Jackpot | W W W | | 3 Reels, 1 Line, 3 Credits Max Bet | |
| 300730X | | 5 and 10 Times™ | XXX | Quick Hits™, (Old School) | 3 Reel, 1 Line, 2 Credits | |
| 300221X | | 5 and 10 Times™ | XXX | Quick Hits™, (Old School) | | |
| 300582X | | Black and White™ | XXX | Quick Hits™ | | |
| 300645X | | Double Jackpot Triple Blazing 7's™ | XXX | Quick Hits™, (Old School) | | |
| 300830X | | Double Jackpot Triple Blazing 7's™ | XXX | Quick Hits™, (Old School) | 3-Reel, 1 Line, 2 Credits | |
| 301012X | | Double Jackpot Triple Blazing 7's™ | XXX | Quick Hits™, (Old School) | 3-Reel, 1 Line, 2 Credits | |
| 300759X | | 5X 10X Pay Black Gold™ | XXX | Quick Hit | 3-Reel, 1 Line, 2 Credits Max Bet | |
| 300274X | | Blazing Dollars | YYY | (Old School) | | |
| AVGBCUP01700-XX | | Breeders Cup | ZZZ | | 5 Reel, 40 Line, 200 Credits | |



Alpha Game Platform™ Progressive Jackpot Configuration Data

Quadruple Letter Jackpot Categories

| Game Software Part Number | SMI Number | Game Name | Jackpot Category | Progressive Name | Description | Setup Screen Group |
|---------------------------|-------------|--------------------------------|------------------|--|------------------------------------|--------------------|
| AVGTFTM02600-XX | | Two For The Money™ | 4A | | | |
| ATGRUBY02600-XX | | Ruby Rush™ | 4B | Hot N' Wild Series | Transparent Reels | |
| ATGBZST02600-XX | | Blazing Stars™ | 4B | Hot N' Wild Series | Transparent Reels | |
| ATGSSKY02600-XX | | Sapphire Sky™ | 4B | Hot N' Wild Series | Transparent Reels | |
| ASGDBL7317UI-XX | | Double Blazing 7's | 4C | | 3 Reel, 1 Line, 3 Credit | |
| 300259X | | Golden Wheels™ | 4D | | 5 Reel, 30 Line, 150 Credit | |
| 300342X | | King's Crown™ | 4D | | 5 Reel, 30 Line, 150 Credit | |
| B530012-X | | Reel Money™ | 4D | Class II | | |
| 301153X | | Golden Wheel™ | 4D | Class II | 5 Reel, 30 Line, 150 Credit | |
| 301049X | | Kings Crown™ | 4D | Class II | 5 Reel, 30 Line, 150 Credit | |
| 20615X | | Cherry Red | 4E | "50's" Series, Internal Mystery Progressive ONLY | 5 Reel, 40 Line | |
| 20616X | | Burger Run | 4E | "50's" Series, Internal Mystery Progressive ONLY | 5 Reel, 40 Line | |
| 20617X | | Drive In | 4E | "50's" Series, Internal Mystery Progressive ONLY | 5 Reel, 40 Line | |
| 20618X | | Rock' n Billy | 4E | "50's" Series, Internal Mystery Progressive ONLY | 5 Reel, 40 Line | |
| 300317X | | Diamond Line Blazing 7's | 4F | (Old School) | 3 Reel, 1 Line, 3 Credit | |
| AVGUTOP026NP-XX | | Ultimate Tower of Power™ | 4G | NAP | 5 Reel, 30 Line, 150 Credit | |
| 300325X | | Blazing 7's™ | 4H | (Old School) | 3 Reel, 1 Line, 3 Credit | |
| 301224X | Y1980-Y1984 | Blazing 7's™ | 4H | | 3 Reel, 1 Line, 3 Credit Max Bet | |
| 300318X | | Diamond Line Blazing 7's | 4 I | | 3 Reel, 1 Line, 2 Credit | |
| 300290X | | Hee Haw® Scatter | 4J | | | |
| 20568X | | 1000 Degrees | 4K | 1,000,000 Degrees™ Series, Class III, NAL | | |
| 20569X | | Black Gold™ Wild | 4K | 1,000,000 Degrees™ Series, Class III, NAL | | |
| 20570X | | Wild Jackpot Black & White™ | 4K | 1,000,000 Degrees™ Series, Class III, NAL | | |
| 20571X | | Wild Jackpot Triple Blazing 7s | 4K | 1,000,000 Degrees™ Series, Class III, NAL | | |
| 20640X | | 1000 Degrees | 4K | 1,000,000 Degrees™ Series, Class III WAP | 5 Reel, 20 Line, 60/100/300 Credit | |
| 20641X | | Black Gold™ Wild | 4K | 1,000,000 Degrees™ Series, Class III | | |
| 20642X | | Wild Jackpot Black & White™ | 4K | 1,000,000 Degrees™ Series, Class III | | |
| 20643X | | Wild Jackpot Triple Blazing 7s | 4K | 1,000,000 Degrees™ Series, Class III | | |
| 300265X | | Plum Crazy™ Wild Times™ | 4L | Wild Times™ Series | | |
| 300266X | | Black Gold™ Wild Times™ | 4L | Wild Times™ Series | | |
| 300267X | | Blazing 7's™ Wild Times™ | 4L | Wild Times™ Series | | |
| 300747X | | Cash Spin | 4M | Hot Shot Progressive | | |
| 300513X | | Cash Spin | 4M | | | |



Alpha Game Platform™ Progressive Jackpot Configuration Data

| Game Software Part Number | SMI Number | Game Name | Jackpot Category | Progressive Name | Description | Setup Screen Group |
|---------------------------|------------|--------------------------------|------------------|-------------------------------------|---|--------------------|
| 300924X | | Cash Spin | 4M | | | |
| 301167X | | Cash Spin | 4M | | 3 Reel, 25 Line, 200 Credit Max Bet | |
| 300237A | | Blazing 7's™, Wild | 4N | Blazing 7's™ Multi-slot | 3 Reel | |
| 300237C | | Blazing 7's™, Free Games | 4N | Blazing 7's™ Multi-slot | 3 Reel | |
| 300237B | | Blazing 7's™ Money Bars | 4N | Blazing 7's™ Multi-slot | 3 Reel | |
| 300161X | | 1000 Degrees | 4O | 1,000,000 Degrees™ Series, Class II | \$0.01 (Penny) Denomination Only, 300 Max Bet Only. | |
| 300162X | | Black Gold™ Wild | 4O | 1,000,000 Degrees™ Series, Class II | \$0.01 (Penny) Denomination Only, 300 Max Bet Only. | |
| 300163X | | Wild Jackpot Black & White™ | 4O | 1,000,000 Degrees™ Series, Class II | \$0.01 (Penny) Denomination Only, 300 Max Bet Only. | |
| 300164X | | Wild Jackpot Triple Blazing 7s | 4O | 1,000,000 Degrees™ Series, Class II | \$0.01 (Penny) Denomination Only, 300 Max Bet Only. | |
| 300335A | | Golden Scepter™ | 4P | Magic Money™ Series | | |
| 300336A | | Ring of Riches™ | 4P | Magic Money™ Series | | |
| 300334A | | Wizard's Wealth™ | 4P | Magic Money™ Series | | |
| 300248X | | Buried Treasure™ | 4Q | Instant Riches™ Series | | |
| 300252X | | Cash Mountain™ | 4Q | Instant Riches™ Series | | |
| 300227X | | Gold Mine™ | 4Q | Instant Riches™ Series | | |
| 300980X | | Gold Mine™ | 4Q | Instant Riches™ Series | | |
| 300981X | | Buried Treasure™ | 4Q | Instant Riches™ Series | | |
| 300982X | | Cash Mountain™ | 4Q | Instant Riches™ Series | | |
| 301430X | | Dragon | 4Q | | 5 Reels, 30 Lines, 600 Credits Max Bet | |
| 301429X | | Las Vegas | 4Q | | 5 Reels, 30 Lines, 600 Credits Max Bet | |
| 300748X | | Wizard's Wealth™ | 4P | Magic Money™ Series, IE | | |
| 300749X | | Golden Scepter™ | 4P | Magic Money™ Series, IE | | |
| 300750X | | Ring of Riches™ | 4P | Magic Money™ Series, IE | | |
| 300257X | | Sultan's Fortune™ | 4R | Riches of Royalty™ Series | | |
| 300254X | | Pharaoh's Treasure™ | 4R | Riches of Royalty™ Series | | |
| 300255X | | King's Riches™ | 4R | Riches of Royalty™ Series | | |
| 300256X | | Emperor's Gold™ | 4R | Riches of Royalty™ Series | | |
| 300626X | | Monte Carlo™ Rich & Famous™ | 4S | | | |
| 28314X | | Seven Dragons, Firebird™ | 4T | Class II | | |
| 300612X | | Cash Spin | 4U | | 3 Reel, 25 Line, 200 Credit | |
| 300689X | | Cash Spin | 4V | | Stepper Reel, 3 Reel, 10 Line, 60 Credit, \$0.05 (Nickel) Denomination Only | |
| 301196X | | Cash Spin | 4V | | 3 Reel, 10 Line, 60 Credit Max Bet | |
| 301338X | | Goddess of Wealth™ | 4V | | 3 Reels, 10 Lines, 60 Credits Max Bet | |
| 301339X | | Jackpot Carousel | 4V | | 3 Reels, 10 Lines, 60 Credits Max Bet | |
| 301042X | | Cash Wizard™ | 4W | | 5 Reel, 30 Line, 250 Credit | |
| 300762X | | Cash Wizard™ | 4W | | 5 Reel, 30 Line, 250 Credit | |
| 301247X | | Cash Wizard™ | 4W | Ontario | 5 Reel, 30 Line, 250 Max Credit | |
| 301247X | | Cash Wizard™ | 4W | | 5 Reel, 30 Line, 250 Max Credit | |
| 300573X | | Amazon Gold | 4X | | | |
| 300845X | | Dragon Lines | 4X | | | |



Alpha Game Platform™ Progressive Jackpot Configuration Data

| Game Software Part Number | SMI Number | Game Name | Jackpot Category | Progressive Name | Description | Setup Screen Group |
|---------------------------|------------|--------------------------|------------------|-------------------------------|--|--------------------|
| 300806X | | House of Fortune | 4X | | | |
| 300629X | | Jewels of Olympus | 4X | | 5 Reel, 30 Line, 300 Credit Max Bet | |
| 301175X | | Wild Wins™ | 4X | | 5 Reel, 100 Line, 1,000 Credit Max Bet | |
| 301219X | | Red Hot Dragons™ | 4X | | 5 Reel, 30 Line, 600 Credit Max Bet | |
| 301218X | | The Queen™ | 4X | | 5 Reel, 30 Line, 600 Credit Max Bet | |
| 300715 | | Dante's Lava Lounge | 4Y | Crazy Cash™ Mystery Jackpot | | |
| 300716 | | Rick's Desert Oasis™ | 4Y | Crazy Cash™ Mystery Jackpot | | |
| 300473 | | Slick's Tiki Bar™ | 4Y | Crazy Cash™ Mystery Jackpot | | |
| 300973X | | Betty Boop's™ Love Meter | 4Z | Multi Area Progressive (MAPS) | 5 Reel, 40 Line, 300 Credit, \$0.01 (Penny) Denominatin Only | |
| 300900X | | Betty Boop's™ Love Meter | 4Z | Multi Area Progressive (MAPS) | 5 Reel, 40 Line, 300 Credit, \$0.01 (Penny) Denominatin Only | |

Quintuple Letter Jackpot Categories

| Game Software Part Number | SMI Number | Game Name | Jackpot Category | Progressive Name | Description | Setup Screen Group |
|---------------------------|-----------------------------|-----------------------------|------------------|-----------------------------|-------------------------------------|--------------------|
| 301061X | | Betty Boop's™ Love Meter | 5A | Near Area Progressive (NAP) | 5 Reel, 40 Line, 250 Credit Max Bet | |
| 301062X | | Betty Boop's™ Love Meter | 5B | | 5 Reel, 40 Line, 500 Credit Max Bet | |
| 301045X | SMI-1865 to SMI-1870 | Code Red™ | 5C | | 5 Reel, 30 Line, 150 Credit Max Bet | |
| 301243X | Y2027 to Y2032 | Midnight Diamonds™ | 5C | | 5 Reel, 30 Line, 150 Credit Max | |
| 301045X | SMI-1871 to SMI-1876 | Code Red™ | 5D | | 5 Reel, 30 Line, 300 Credit Max Bet | |
| 301243X | Y2033 to Y2038 | Midnight Diamonds™ | 5D | | 5 Reel, 30 Line, 300 Credit Max | |
| 300833X | | Ole Jalapeno Hot & Spicy™ | 5E | Ole Jalapenos | 5 Reel, 30 Line, 200 Credit Max Bet | |
| 300794X | | Ole Jalapeno Mild and Wild™ | 5E | Ole Jalapenos | 5 Reel, 30 Line, 200 Credit Max Bet | |
| 300898X | | Ole Jalapeno Hot & Spicy™ | 5F | Ole Jalapenos | 5 Reel, 30 Line, 400 Credit Max Bet | |
| 300897X | | Ole Jalapeno Mild and Wild™ | 5F | Ole Jalapenos | 5 Reel, 30 Line, 400 Credit Max Bet | |
| 300848X | SMI-Y1759, Y1761, and Y1763 | Wonder World | 5G | | 5 Reel, 30 Line, 450 Credit Max Bet | |
| 300967X | Y1799, Y1801, Y1803 | Solid Gold | 5G | | 5 Reel, 30 Line, 450 Credit Max Bet | |
| 300968X | Y1850, Y1852 | Royal Diamonds | 5G | | 5 Reel, 30 Line, 450 Credit Max Bet | |
| 300969X | Y1842, Y1844 | Blue Whale | 5G | | 5 Reel, 30 Line, 450 Credit Max Bet | |
| 300848X | SMI-Y1758, Y1760, and Y1762 | Wonder World | 5H | | 5 Reel, 30 Line, 450 Credit Max Bet | |
| 300967X | Y1798, Y1800, Y1802 | Solid Gold | 5H | | 5 Reel, 30 Line, 450 Credit Max Bet | |
| 300968X | Y1847 to Y1849, Y1851 | Royal Diamonds | 5H | | 5 Reel, 30 Line, 450 Credit Max Bet | |
| 300969X | Y1841, Y1843, Y1845, Y1846 | Blue Whale | 5H | | 5 Reel, 30 Line, 450 Credit Max Bet | |



Alpha Game Platform™ Progressive Jackpot Configuration Data

| Game Software Part Number | SMI Number | Game Name | Jackpot Category | Progressive Name | Description | Setup Screen Group |
|---------------------------|----------------|------------------------------|------------------|------------------|--|--------------------|
| 300745X | | Sweets 'N' Treats™ | 5I | | 5 Reel, 40 Line, 200 Credit Max Bet | |
| 301046X | | Yours, Mine and Ours!™ | 5J | Hot Shot | 10 Reel, 40 Line, 250 Credit Max bet | |
| 301200X | Y1943 to Y1948 | Moon Goddess™ | 5K | | 5 Reel, 30 Line, 150 Credit Max Bet | |
| 301250X | Y2093 to Y2098 | Sun God™ | 5K | | 5 Reel, 30 Line, 150 Credit Max Bet | |
| 301200X | Y1955 to Y1960 | Moon Goddess™ | 5L | | 5 Reel, 30 Line, 300 Credit Max Bet | |
| 301250X | Y2099 to Y2104 | Sun God™ | 5L | | 5 Reel, 30 Line, 300 Credit Max Bet | |
| 300960X | | Ole Jalapeno Hot & Spicy™ | 5M | Ole Jalapenos | 5 Reel, 30 Line, 200 Credit Max Bet | |
| 300936X | | Ole Jalapeno Mild and Wild™ | 5M | Ole Jalapenos | 5 Reel, 30 Line, 200 Credit Max Bet | |
| 301385X | | Precious Diamonds™ | 5N | | 5 Reel, 30 Line, 600 Credit Max Bet | |
| 28394X | | Beijing Treasures™ | 5O | | 5 Reel, 30 Line, 300 Credit Max Bet | |
| 301304X | | Playboy® Playmate Party | 5O | | 5 Reel, 30 Line, 300 Credit Max Bet | |
| 28392X | | Treasures Of Egypt | 5O | | 5 Reel, 25 Line, 300 Credit Max Bet | |
| 301268X | | Cash Spin Jackpot | 5P | WAP | 3 Reels, 1 Line, 3 Credits Max Bet | |
| 301440X | | Grease™ | 5Q | | 10 Reels, 50 Lines 300 Credits Max Bet | |
| 301142X | | Grease™ | 5R | WAP | 10 Reels, 50 Lines 300 Credits Max Bet | |
| 301361X | | Voodoo Brew | 5S | | 5 Reels, 40 Lines, 500 Credits Max Bet | |
| 301623X | | Chimney Stacks™ | 5S | | 5 Reels, 40 Lines, 2,500 Credits Max Bet | |
| 301596X | | Pharaoh's Dream™ | 5S | | 5 Reels, 40 Lines, 2,500 Credits Max Bet | |
| 301360X | | Mermaid Kingdom™ | 5T | | 5 Reels, 30 Lines, 300 Credits Max Bet | |
| 301349X | | Super Phoenix™ | 5T | | 5 Reels, 30 Lines, 300 Credits Max Bet | |
| 301576X | | Michael Jackson King of Pop™ | 5U | WAP | 5 Reels, 25 Lines, 320 Credits Max Bet | |



Alpha Game Platform™ Progressive Jackpot Configuration Data

GameMaker™ HD, Suite 7, Poker, Jackpot Categories

| Game Software Part Number | SMI Number | Game Name | Jackpot Category | Progressive Name | Description | Setup Screen Group |
|---------------------------|------------|------------------------------|------------------|------------------|---------------------------|--------------------|
| AVGGMM702500-XX | P0800 | All American Poker | PA | | PokerAllAmerican94a | |
| AVGGMM702500-XX | P0801 | All American Poker | PA | | PokerAllAmerican96a | |
| AVGGMM702500-XX | P0786 | All American Poker | PA | | PokerAllAmerican98a | |
| AVGGMM702500-XX | P1006 | Bonus Aces Poker | PB | | PokerBonusAces97a | |
| AVGGMM702500-XX | P1007 | Bonus Aces Poker | PB | | PokerBonusAces98a | |
| AVGGMM702500-XX | P1008 | Bonus Aces Poker | PB | | PokerBonusAces99a | |
| AVGGMM702500-XX | P0794 | Bonus Deuces Wild Poker | PC | | PokerBonusDeucesWild94a | |
| AVGGMM702500-XX | P0795 | Bonus Deuces Wild Poker | PC | | PokerBonusDeucesWild95a | |
| AVGGMM702500-XX | P0796 | Bonus Deuces Wild Poker | PC | | PokerBonusDeucesWild96a | |
| AVGGMM702500-XX | P0797 | Bonus Deuces Wild Poker | PC | | PokerBonusDeucesWild97a | |
| AVGGMM702500-XX | P0804 | Bonus Deuces Wild Poker | PC | | PokerBonusDeucesWild98a | |
| AVGGMM702500-XX | P0975 | Bonus Deuces Wild Poker | PD | | PokerBonusDeucesWild95b | |
| AVGGMM702500-XX | P0976 | Bonus Deuces Wild Poker | PD | | PokerBonusDeucesWild96b | |
| AVGGMM702500-XX | P0977 | Bonus Deuces Wild Poker | PD | | PokerBonusDeucesWild97b | |
| AVGGMM702500-XX | P0978 | Bonus Deuces Wild Poker | PD | | PokerBonusDeucesWild98b | |
| AVGGMM702500-XX | P0979 | Bonus Deuces Wild Poker | PD | | PokerBonusDeucesWild99b | |
| AVGGMM702500-XX | P0980 | Bonus Deuces Wild Poker | PD | | PokerBonusDeucesWild100b | |
| AVGGMM702500-XX | P0798 | Bonus Poker | PE | | PokerBonus96a | |
| AVGGMM702500-XX | P0349 | Bonus Poker | PE | | PokerBonus97a | |
| AVGGMM702500-XX | P0339 | Bonus Poker | PE | | PokerBonus98a | |
| AVGGMM702500-XX | P0245 | Bonus Poker | PE | | PokerBonus99a | |
| AVGGMM702500-XX | P0992 | Bonus Poker | PF | | PokerBonus96b | |
| AVGGMM702500-XX | P0993 | Bonus Poker | PF | | PokerBonus97b | |
| AVGGMM702500-XX | P0994 | Bonus Poker | PF | | PokerBonus98b | |
| AVGGMM702500-XX | P0995 | Bonus Poker | PF | | PokerBonus99b | |
| AVGGMM702500-XX | P0046 | Deuces Wild™ Poker | PG | | PokerDeucesWild93a | |
| AVGGMM702500-XX | P0048 | Deuces Wild™ Poker | PG | | PokerDeucesWild94a | |
| AVGGMM702500-XX | P0532 | Deuces Wild™ Poker | PG | | PokerDeucesWild96a | |
| AVGGMM702500-XX | P0239 | Deuces Wild™ Poker | PG | | PokerDeucesWild97a | |
| AVGGMM702500-XX | P0803 | Deuces Wild™ Poker | PG | | PokerDeucesWild98a | |
| AVGGMM702500-XX | P0640 | Double Bonus Poker | PH | | PokerDoubleBonus94a | |
| AVGGMM702500-XX | P0766 | Double Bonus Poker | PH | | PokerDoubleBonus96a | |
| AVGGMM702500-XX | P0806 | Double Bonus Poker | PH | | PokerDoubleBonus97a | |
| AVGGMM702500-XX | P0619 | Double Double Bonus Poker | PI | | PokerDoubleDoubleBonus94a | |
| AVGGMM702500-XX | P0620 | Double Double Bonus Poker | PI | | PokerDoubleDoubleBonus95a | |
| AVGGMM702500-XX | P0621 | Double Double Bonus Poker | PI | | PokerDoubleDoubleBonus96a | |
| AVGGMM702500-XX | P0622 | Double Double Bonus Poker | PI | | PokerDoubleDoubleBonus97a | |
| AVGGMM702500-XX | P0779 | Double Double Bonus Poker | PI | | PokerDoubleDoubleBonus98a | |
| AVGGMM702500-XX | P0987 | Double Double Bonus Poker | PJ | | PokerDoubleDoubleBonus95b | |
| AVGGMM702500-XX | P0988 | Double Double Bonus Poker | PJ | | PokerDoubleDoubleBonus96b | |
| AVGGMM702500-XX | P0989 | Double Double Bonus Poker | PJ | | PokerDoubleDoubleBonus97b | |
| AVGGMM702500-XX | P0990 | Double Double Bonus Poker | PJ | | PokerDoubleDoubleBonus98b | |
| AVGGMM702500-XX | P0991 | Double Double Bonus Poker | PJ | | PokerDoubleDoubleBonus99b | |
| AVGGMM702500-XX | P0839 | Draw Poker (Jacks or Better) | PK | | PokerDraw96a | |
| AVGGMM702500-XX | P0840 | Draw Poker (Jacks or Better) | PK | | PokerDraw97a | |



Alpha Game Platform™ Progressive Jackpot Configuration Data

| Game Software Part Number | SMI Number | Game Name | Jackpot Category | Progressive Name | Description | Setup Screen Group |
|---------------------------|------------|---|------------------|------------------|---------------------------|--------------------|
| AVGGMM702500-XX | P0841 | Draw Poker (Jacks or Better) | PK | | PokerDraw98a | |
| AVGGMM702500-XX | P0842 | Draw Poker (Jacks or Better) | PK | | PokerDraw99a | |
| AVGGMM702500-XX | P0373 | Four Play | PL | | PokerFourPlay95a | |
| AVGGMM702500-XX | P0791 | Four Play | PL | | PokerFourPlay96a | |
| AVGGMM702500-XX | P0792 | Four Play | PL | | PokerFourPlay97a | |
| AVGGMM702500-XX | P0793 | Four Play | PL | | PokerFourPlay98a | |
| AVGGMM702500-XX | P0997 | Four Play | PM | | PokerFourPlay95b | |
| AVGGMM702500-XX | P0998 | Four Play | PM | | PokerFourPlay96b | |
| AVGGMM702500-XX | P0999 | Four Play | PM | | PokerFourPlay97b | |
| AVGGMM702500-XX | P1000 | Four Play | PM | | PokerFourPlay99b | |
| AVGGMM702500-XX | P0805 | Joker Wild Poker (Kings or Better) | PN | | PokerJoker94a | |
| AVGGMM702500-XX | P0014 | Joker Wild Poker (Kings or Better) | PN | | PokerJoker96a | |
| AVGGMM702500-XX | P0015 | Joker Wild Poker (Kings or Better) | PN | | PokerJoker98a | |
| AVGGMM702500-XX | P0865 | Joker Wild Poker (2 pair or Better/5 of a Kind) | PO | | PokerJoker5Kind97a | |
| AVGGMM702500-XX | P0864 | Joker Wild Poker (2 pair or Better/5 of a Kind) | PO | | PokerJoker5Kind99a | |
| AVGGMM702500-XX | P0872 | Pick 'em Poker™ Deuces Wild | PP | | PokerDeucesWildPickem97a | |
| AVGGMM702500-XX | P0873 | Pick 'em Poker™ Deuces Wild | PP | | PokerDeucesWildPickem98a | |
| AVGGMM702500-XX | P0972 | Pick 'em Joker Wild Royal Flush | PQ | | PokerJokerRFPickem96a | |
| AVGGMM702500-XX | P0973 | Pick 'em Joker Wild Royal Flush | PQ | | PokerJokerRFPickem98a | |
| AVGGMM702500-XX | P0970 | Pick 'em Poker™ Nines or Better | PR | | PokerPickem97a | |
| AVGGMM702500-XX | P0971 | Pick 'em Poker™ Nines or Better | PR | | PokerPickem98a | |
| AVGGMM702500-XX | P0951 | Pick 'em Poker™ Nines or Better | PS | | PokerPickem99a | |
| AVGGMM702500-XX | P0849 | Triple Kicker™ Poker | PT | | PokerTripleKickerBonus95a | |
| AVGGMM702500-XX | P0850 | Triple Kicker™ Poker | PT | | PokerTripleKickerBonus96a | |
| AVGGMM702500-XX | P0851 | Triple Kicker™ Poker | PT | | PokerTripleKickerBonus97a | |
| AVGGMM702500-XX | P0852 | Triple Kicker™ Poker | PT | | PokerTripleKickerBonus98a | |

GameMaker™ HD, Suite 7, Slot, Jackpot Categories

| Game Software Part Number | SMI Number | Game Name | Jackpot Category | Progressive Name | Description | Setup Screen Group |
|---------------------------|------------|-----------------|------------------|------------------|-----------------|--------------------|
| AVGGMM702500-XX | Y1335 | Bonus 7s™ Grand | SA | | Bonus7sGrand85a | |
| AVGGMM702500-XX | Y1336 | Bonus 7s™ Grand | SA | | Bonus7sGrand88a | |
| AVGGMM702500-XX | Y1337 | Bonus 7s™ Grand | SA | | Bonus7sGrand90a | |
| AVGGMM702500-XX | Y1338 | Bonus 7s™ Grand | SA | | Bonus7sGrand92a | |
| AVGGMM702500-XX | Y1339 | Bonus 7s™ Grand | SA | | Bonus7sGrand94a | |
| AVGGMM702500-XX | Y1340 | Bonus 7s™ Grand | SA | | Bonus7sGrand96a | |
| AVGGMM702500-XX | Y1341 | Winning Times™ | SB | | WinningTimes86 | |
| AVGGMM702500-XX | Y1342 | Winning Times™ | SB | | WinningTimes88 | |
| AVGGMM702500-XX | Y1343 | Winning Times™ | SB | | WinningTimes90 | |
| AVGGMM702500-XX | Y1344 | Winning Times™ | SB | | WinningTimes92 | |
| AVGGMM702500-XX | Y1345 | Winning Times™ | SB | | WinningTimes94 | |
| AVGGMM702500-XX | Y1346 | Winning Times™ | SB | | WinningTimes96 | |

S&H, Green Points and Green Stamps are service marks of the Sperry and Hutchinson Company, Inc.

©2005-2011 Playboy. PLAYBOY and RABBIT HEAD DESIGN are marks of Playboy and used under license by Bally Gaming, Inc.



Alpha Game Platform™ Progressive Jackpot Configuration Data

HEE HAW® is a registered trademark of Gaylord Entertainment Company. Copyright ©2005 Gaylord Entertainment Company. All rights reserved.

©2008-2011 Atari Interactive, Inc. All rights reserved. ATARI, the ATARI logo, PONG and the PONG logo are registered trademarks of Atari Interactive, Inc. or its affiliates in the U.S. and other territories. Used with permission.

Betty Boop™ Hearst Holdings, Inc./Fleischer Studios, Inc. © 2011 King Features Syndicate, Inc./Fleischer Studios, Inc.

Wild Wins™, An Ainsworth title available as a Bally compacted game.

GREASE - ©2012 Paramount Pictures. All Rights Reserved.

Michael Jackson—©2012 Triumph International, Inc. under license from Bravado Merchandising. All rights reserved.



Alpha Game Platform™ Progressive Jackpot Configuration Data

Jackpot Category Settings

| Jackpot Category | Setting |
|------------------|--|
| A | JP0 = 100,000 x Denomination |
| | JP1 = 10,000 x Denomination |
| | JP2 = 2,000 x Denomination |
| B | JP0 = 2,500 x Max Bet x Denomination |
| | JP1 = 1,000 x Max Bet x Denomination |
| | JP2 = 100 x Max Bet x Denomination |
| | JP3 = 50 x Max Bet x Denomination |
| | JP4 = 10 x Max Bet x Denomination |
| C | JP0 = 10,000 x Max Bet x Denomination |
| | JP1 = 1,000 x Max Bet x Denomination |
| | JP2 = 100 x Max Bet x Denomination |
| | JP3 = 50 x Max Bet x Denomination |
| | JP4 = 10 x Max Bet x Denomination |
| D | JP0 = 5,000 x Max Bet per Line x Denomination |
| E | JP0 = 20,000 x Denomination |
| F | No onscreen progressive. Game progressive is configurable for external only and requires additional hardware. |
| G | Not Used. |
| H | JP0 = 10,000 x Max Bet per Line x Denomination |
| | JP1 = 6,000 x Max Bet per Line x Denomination |
| | JP2 = 4,000 x Max Bet per Line x Denomination |
| I | JP0 = 2,000 x Max Bet per Line x Denomination |
| J | JP0 = 100,000 x Denomination |
| | JP1 = 10,000 x Denomination |
| | JP2 = 5,000 x Denomination |
| | JP3 = 2,000 x Denomination |
| | JP4 = 500 x Denomination |
| K | JP0 = 10,000 x Max Bet per Line x Denomination |
| L | JP0 = 100,000 x Denomination |
| M | JP0 = 100,000 x Denomination |
| | JP1 = 50,000 x Denomination |
| | JP2 = 10,000 x Denomination |
| | JP3 = 2,000 x Denomination |
| | JP4 = 500 x Denomination |



Alpha Game Platform™ Progressive Jackpot Configuration Data

| Jackpot Category | Setting |
|------------------|--------------------------------------|
| N | JP0 = 5,000 x Max Bet x Denomination |
| | JP1 = 2,000 x Max Bet x Denomination |
| | JP2 = 650 x Max Bet x Denomination |
| | JP3 = 100 x Max Bet x Denomination |
| | JP4 = 50 x Max Bet x Denomination |
| | JP5 = 10 x Max Bet x Denomination |
| O | JP0 = 4,000 x Max Bet x Denomination |
| | JP1 = 200 x Max Bet x Denomination |
| | JP2 = 100 x Max Bet x Denomination |
| | JP3 = 20 x Max Bet x Denomination |
| | JP4 = 10 x Max Bet x Denomination |
| P | JP0 = 2,500 x Max Bet x Denomination |
| | JP1 = 450 x Max Bet x Denomination |
| | JP2 = 120 x Max Bet x Denomination |
| | JP3 = 24 x Max Bet x Denomination |
| Q | JP0 = 100,000 x Denomination |
| | JP1 = 10,000 x Denomination |
| | JP2 = 4,000 x Denomination |
| | JP3 = 2,500 x Denomination |
| | JP4 = 500 x Denomination |
| R | JP0 = 10,000 x Denomination |
| S | JP0 = 4,000 x Denomination |
| T | JP0 = 1,000 x Denomination |
| U | JP0 = 20,000 x Denomination |
| | JP1 = 1,600 x Denomination |
| | JP2 = 400 x Denomination |
| V | JP0 = 20,000 x Denomination |
| | JP1 = 2,000 x Denomination |
| | JP2 = 500 x Denomination |
| W | JP0 = 10,000 x Denomination |
| | JP1 = 1,000 x Denomination |
| | JP2 = 400 x Denomination |
| | JP3 = 100 x Denomination |
| | JP4 = 60 x Denomination |
| | JP5 = 40 x Denomination |
| | JP6 = 20 x Denomination |



Alpha Game Platform™ Progressive Jackpot Configuration Data

| Jackpot Category | Setting |
|------------------|--|
| X | NOTE: The reset amounts are the same for all denominations (1¢, 2¢, 5¢). |
| | JP0 = \$ 25,000 |
| | JP1 = \$ 1,000 |
| | JP2 = \$ 100 |
| | JP3 = \$ 50 |
| | JP4 = \$ 10 |
| Y | NOTE: The reset amounts are the same for all denominations (1¢, 2¢, 5¢). |
| | JPX = Static Jackpot = One Million Dollars for all denominations (1¢, 2¢, 5¢). |
| | NOTE: Automatically Set. Not configurable by the Operator. |
| | JP0 = \$ 1,000 |
| | JP1 = \$ 100 |
| | JP2 = \$ 50 |
| Z | JP0 = 20,000 x Max Bet per Card x Denomination |
| | JP1 = 1,000 x Max Bet per Card x Denomination |
| AA | JP0 = 5,000 x Denomination |
| BB | JP0 = 20,000 x Max Bet per Line x Denomination |
| CC | JP0 = 1,000,000 x Denomination |
| | NOTE: One Million x Denomination |
| | JP1 = 10,000 x Denomination |
| | JP2 = 5,000 x Denomination |
| | JP3 = 2,000 x Denomination |
| DD | JP4 = 500 x Denomination |
| | JP0 = 500,000 x Denomination |
| | JP1 = 3,000 x Denomination |
| | JP2 = 1,800 x Denomination |
| | JP3 = 800 x Denomination |
| EE | JP4 = 200 x Denomination |
| | JP0 = 10,000 x Max Bet x Denomination |
| | Available Denominations \$0.25, \$1.00, and \$5.00. |
| FF | NOTE: The reset amounts are the same for all denominations. |
| | JP0 = \$ 500,000.00 |
| GG | NOTE: The unit amount is dollars, not credits. |
| | JP0 = 1,000,000 x Denomination |
| HH | NOTE: One Million x Denomination |
| | JP0 = 500,000 x Denomination |
| II | JP0 = 15,000 x Denomination |
| JJ | JP0 = 25,000 x Denomination |



Alpha Game Platform™ Progressive Jackpot Configuration Data

| Jackpot Category | Setting |
|------------------|--|
| KK | JP0 = 100,000 x Denomination |
| | JP1 = 10,000 x Denomination |
| | JP2 = 750 x Denomination |
| LL | JP0 = 50,000 x Max Bet x Denomination |
| | JP1 = 1,000 x Max Bet x Denomination |
| | JP2 = 100 x Max Bet x Denomination |
| | JP3 = 50 x Max Bet x Denomination |
| | JP4 = 10 x Max Bet x Denomination |
| MM | JP0 = 40,000 x Max Bet x Denomination |
| | JP1 = 1,000 x Max Bet x Denomination |
| | JP2 = 100 x Max Bet x Denomination |
| | JP3 = 50 x Max Bet x Denomination |
| | JP4 = 10 x Max Bet x Denomination |
| NN | JP0 = 30,000 x Max Bet x Denomination |
| | JP1 = 1,000 x Max Bet x Denomination |
| | JP2 = 100 x Max Bet x Denomination |
| | JP3 = 50 x Max Bet x Denomination |
| | JP4 = 10 x Max Bet x Denomination |
| OO | JP0 = 25,000 x Max Bet x Denomination |
| | JP1 = 1,000 x Max Bet x Denomination |
| | JP2 = 100 x Max Bet x Denomination |
| | JP3 = 50 x Max Bet x Denomination |
| | JP4 = 10 x Max Bet x Denomination |
| PP | JP0 = 20,000 x Max Bet x Denomination |
| | JP1 = 1,000 x Max Bet x Denomination |
| | JP2 = 100 x Max Bet x Denomination |
| | JP3 = 50 x Max Bet x Denomination |
| | JP4 = 10 x Max Bet x Denomination |
| QQ | JP0 = 15,000 x Max Bet x Denomination |
| | JP1 = 1,000 x Max Bet x Denomination |
| | JP2 = 100 x Max Bet x Denomination |
| | JP3 = 50 x Max Bet x Denomination |
| | JP4 = 10 x Max Bet x Denomination |
| RR | JP0 = 667 x Max Bet x Denomination |
| SS | JP0 = 5,000 x Max Bet x Denomination NOTE: Max Bet excludes the bonus bet, if applicable. |



Alpha Game Platform™ Progressive Jackpot Configuration Data

| Jackpot Category | Setting |
|------------------|---------------------------------------|
| TT | JP0 = 2,000 x Max Bet x Denomination |
| | JP1 = 200 x Max Bet x Denomination |
| | JP2 = 60 x Max Bet x Denomination |
| | JP3 = 40 x Max Bet x Denomination |
| | JP4 = 20 x Max Bet x Denomination |
| | JP5 = 8 x Max Bet x Denomination |
| | JP6 = 4 x Max Bet x Denomination |
| UU | JP0 = 2,000 x Max Bet x Denomination |
| | JP1 = 700 x Max Bet x Denomination |
| | JP2 = 80 x Max Bet x Denomination |
| | JP3 = 40 x Max Bet x Denomination |
| | JP4 = 20 x Max Bet x Denomination |
| | JP5 = 8 x Max Bet x Denomination |
| | JP6 = 4 x Max Bet x Denomination |
| VV | JP0 = 10,000 x Max Bet x Denomination |
| | JP1 = 2,500 x Max Bet x Denomination |
| | JP2 = 1,000 x Max Bet x Denomination |
| | JP3 = 450 x Max Bet x Denomination |
| | JP4 = 100 x Max Bet x Denomination |
| | JP5 = 50 x Max Bet x Denomination |
| | JP6 = 24 x Max Bet x Denomination |
| WW | JP7 = 10 x Max Bet x Denomination |
| | JP0 = 100,000 x Denomination |
| | JP1 = 100,000 x Denomination |
| | JP2 = 10,000 x Denomination |
| | JP3 = 10,000 x Denomination |
| | JP4 = 5,000 x Denomination |
| | JP5 = 5,000 x Denomination |
| | JP6 = 1,000 x Denomination |
| | JP7 = 1,000 x Denomination |
| XX | JP0 = 50,000 x Denomination |
| YY | JP0 = 150,000 x Denomination |
| ZZ | JP0 = 20,000 x Denomination |
| | JP1 = 1,000 x Denomination |
| | JP2 = 200 x Denomination |



Alpha Game Platform™ Progressive Jackpot Configuration Data

| Jackpot Category | Setting |
|------------------|---|
| AAA | JP0 = 20,000 x Denomination |
| | JP1 = 500 x Denomination |
| | JP2 = 100 x Denomination |
| BBB | JP0 = 50,000 x Denomination |
| | JP1 = 30,000 x Denomination |
| | JP2 = 20,000 x Denomination |
| CCC | JP0 = 100,000 x Max Bet per Line x Denomination |
| DDD | JP0 = 20,000 x Denomination |
| | JP1 = 2,000 x Denomination |
| EEE | JP0 = 10,000 x Max Bet per Line x Denomination |
| | JP1 = 2,000 x Max Bet per Line x Denomination |
| | JP2 = 200 x Max Bet per Line x Denomination |
| | JP3 = 20 x Max Bet per Line x Denomination |
| | JP4 = 8 x Max Bet per Line x Denomination |
| FFF | JP0 = 15,000 x Max Bet per Line x Denomination |
| GGG | Available Denomination: \$0.05 (Nickel), Only for 60 credit Max Bet. NOTE: The reset amounts are in dollars, not credits. |
| | JP0 = \$1,000,000.00 (One Million Dollars) |
| | JP1 = \$15,000.00 |
| | JP2 = \$600.00 |
| | JP3 = \$150.00 |
| | JP4 = \$30.00 |
| HHH | JP0 = 2,000,000 x Denomination NOTE: Two Million x Denomination |
| III | JP0 = 3,000,000 x Denomination NOTE: Three Million x Denomination |
| JJJ | JP0 = 1,000 x Max Bet x Denomination |
| LLL | JP0 = 250,000 x Denomination |
| MMM | JP0 = 50,000 x Denomination |
| | JP1 = 3,000 x Denomination |
| | JP2 = 1,800 x Denomination |
| | JP3 = 800 x Denomination |
| | JP4 = 200 x Denomination |
| NNN | JP0 = 1,000,000 x Denomination NOTE: One Million x Denomination |
| | JP1 = 12,500 x Denomination |
| | JP2 = 7,500 x Denomination |
| | JP3 = 2,500 x Denomination |
| | JP4 = 1,000 x Denomination |



Alpha Game Platform™ Progressive Jackpot Configuration Data

| Jackpot Category | Setting |
|------------------|---|
| OOO | JP0 = 166,667 x Max Bet x Denomination |
| | JP1 = 1,000 x Max Bet x Denomination |
| | JP2 = 80 x Max Bet x Denomination |
| | JP3 = 60 x Max Bet x Denomination |
| | JP4 = 40 x Max Bet x Denomination |
| | JP5 = 20 x Max Bet x Denomination |
| PPP | JP0 = 800 x Max Bet x Denomination |
| | JP1 = 80 x Max Bet x Denomination |
| | JP2 = 10 x Max Bet x Denomination |
| QQQ | JP0 = 800 x Max Bet x Denomination |
| | JP1 = 40 x Max Bet x Denomination |
| RRR | JP0 = 125,000 x Max Bet x Denomination |
| SSS | Available Denomination: \$0.01 (Penny), Only for 200 credit Max Bet. NOTE: The reset amounts are in dollars, not credits. |
| | JP0 = \$1,000,000.00 (One Million Dollars) |
| | JP1 = \$5,000.00 |
| | JP2 = \$400.00 |
| | JP3 = \$100.00 |
| | JP4 = \$20.00 |
| TTT | JP0 = 2,500,000 x Denomination NOTE: 2.5 Million x Denomination |
| | JP1 = 100,000 x Denomination |
| | JP2 = 15,000 x Denomination |
| | JP3 = 5,000 x Denomination |
| | JP4 = 1,000 x Denomination |
| UUU | JP0 = 10,000 x Max Bet per Line x Denomination |
| | JP1 = 1,000 x Max Bet per Line x Denomination |
| | JP2 = 250 x Max Bet per Line x Denomination |
| V V V | JP0 = 2,000 x Denomination |
| W W W | JP0 = 10,000 x Denomination |
| | JP1 = 1,000 x Denomination |
| XXX | JP0 = 200 x Denomination |
| YYY | JP0 = 4,000 x Denomination |
| | JP1 = 1,000 x Denomination |
| ZZZ | JP0 = 1,000 x Max Bet x Denomination |
| | JP1 = 100 x Max Bet x Denomination |
| | JP2 = 55 x Max Bet x Denomination |
| | JP3 = 15 x Max Bet x Denomination |
| | JP4 = 6 x Max Bet x Denomination |



Alpha Game Platform™ Progressive Jackpot Configuration Data

| Jackpot Category | Setting |
|------------------|--|
| 4A | JP0 = 1,000,000 x Denomination NOTE: One Million x Denomination |
| | JP1 = 15,000 x Denomination |
| | JP2 = 2,500 x Denomination |
| | JP3 = 1,000 x Denomination |
| | JP4 = 15,000 x Denomination |
| | JP5 = 2,500 x Denomination |
| | JP6 = 1,000 x Denomination |
| 4B | JP0 = 2,000 x Max Bet x Denomination |
| | JP1 = 720 x Max Bet x Denomination |
| | JP2 = 320 x Max Bet x Denomination |
| | JP3 = 160 x Max Bet x Denomination |
| | JP4 = 80 x Max Bet x Denomination |
| 4C | JP0 = 5,000 x Denomination |
| | JP1 = 1,000 x Denomination |
| 4D | JP0 = 2,500,000 x Denomination NOTE: 2.5 Million x Denomination |
| | JP1 = 100,000 x Denomination |
| | JP2 = 10,000 x Denomination |
| | JP3 = 5,000 x Denomination |
| | JP4 = 1,000 x Denomination |
| 4E | NOTE: The reset amounts are in dollars, not credits. |
| | JP0 = \$ 200.00 |
| | JP1 = \$ 100.00 |
| | JP2 = \$ 15.00 |
| 4F | JP0 = 2,400 x Denomination |
| 4G | JP0 = 16,500 x Max Bet x Denomination |
| | JP1 = 1,000 x Max Bet x Denomination |
| | JP2 = 80 x Max Bet x Denomination |
| | JP3 = 60 x Max Bet x Denomination |
| | JP4 = 40 x Max Bet x Denomination |
| | JP5 = 20 x Max Bet x Denomination |
| 4H | JP0 = 1,500 x Denomination |
| 4I | JP0 = 1,199 x Denomination |
| 4J | JP0 = 50,000 x Denomination |
| | JP1 = 5,000 x Denomination |



Alpha Game Platform™ Progressive Jackpot Configuration Data

| Jackpot Category | Setting |
|------------------|--|
| 4K | Available Denominations: \$0.01 (Penny), \$0.03 (Three Cents), and \$0.05 (Nickel) only. NOTE: Max Bet depends upon the denomination. The game can be configured as 60, 100, or 300 Max Bet, depending upon the denomination. 60 Max Bet must use \$0.05 (Nickel) only. 100 Max Bet must use \$0.03 (Three cents) only. 300 Max Bet must use \$0.01 (Penny) only. |
| | JP0 = $333,333.33 \times \text{Max Bet} \times \text{Denomination} = \$1,000,000.00$ (One Million Dollars [Rounded up 0.01]) |
| | JP1 = $5,000 \times \text{Max Bet} \times \text{Denomination} = \$15,000.00$ |
| | JP2 = $200 \times \text{Max Bet} \times \text{Denomination} = \600.00 |
| | JP3 = $50 \times \text{Max Bet} \times \text{Denomination} = \150.00 |
| | JP4 = $10 \times \text{Max Bet} \times \text{Denomination} = \30.00 |
| 4L | JP0 = $20,000 \times \text{Max Bet per Line} \times \text{Denomination}$ |
| | JP1 = $300 \times \text{Max Bet} \times \text{Denomination}$ |
| | JP2 = $50 \times \text{Max Bet} \times \text{Denomination}$ |
| 4M | JP0 = $500,000 \times \text{Denomination}$ |
| | JP1 = $10,000 \times \text{Denomination}$ |
| 4N | JP0 = $40,000 \times \text{Max Bet per Line} \times \text{Denomination}$ |
| 4O | Available Denomination: \$0.01 (Penny), Only for 300 credit Max Bet. NOTE: The reset amounts are in dollars, not credits. |
| | JP0 = \$1,000,000.00 (One Million Dollars) |
| | JP1 = \$7,500.00 |
| | JP2 = \$600.00 |
| | JP3 = \$150.00 |
| | JP4 = \$30.00 |
| 4P | JP0 = $500,000 \times \text{Denomination}$ |
| | JP1 = $50,000 \times \text{Denomination}$ |
| | JP2 = $10,000 \times \text{Denomination}$ |
| | JP3 = $5,000 \times \text{Denomination}$ |
| | JP4 = $2,500 \times \text{Denomination}$ |
| | JP5 = $1,500 \times \text{Denomination}$ |
| | JP6 = $750 \times \text{Denomination}$ |
| 4Q | JP0 = $2,000 \times \text{Max Bet} \times \text{Denomination}$ |
| | JP1 = $650 \times \text{Max Bet} \times \text{Denomination}$ |
| | JP2 = $100 \times \text{Max Bet} \times \text{Denomination}$ |
| | JP3 = $50 \times \text{Max Bet} \times \text{Denomination}$ |
| | JP4 = $10 \times \text{Max Bet} \times \text{Denomination}$ |
| 4R | JP0 = $80,000 \times \text{Max Bet per Line} \times \text{Denomination}$ |
| 4S | JP0 = $50,000 \times \text{Max Bet per Line} \times \text{Denomination}$ |



Alpha Game Platform™ Progressive Jackpot Configuration Data

| Jackpot Category | Setting |
|------------------|--|
| 4T | JP0 = 100,000 x Denomination |
| | JP1 = 10,000 x Denomination |
| | JP2 = 5,000 x Denomination |
| | JP3 = 3,000 x Denomination |
| | JP4 = 2,500 x Denomination |
| | JP5 = 1,500 x Denomination |
| | JP6 = 1,000 x Denomination |
| 4U | JP0 = 100,000 x Denomination |
| | JP1 = 5,000 x Denomination |
| 4V | JP0 = 300,000 x Denomination |
| | JP1 = 2,000 x Denomination |
| 4W | JP0 = 1,000,000 x Denomination |
| | JP1 = 25,000 x Denomination |
| | JP2 = 2,500 x Denomination |
| 4X | JP0 = 25,000 x Denomination |
| | JP1 = 2,000 x Denomination |
| 4Y | JP0 = 25,000 x Denomination |
| | JP1 = 5,000 x Denomination |
| 4Z | JP0 = 100,000,000 x Denomination |
| | JP1 = 100,000 x Denomination |
| | JP2 = 5,000 x Denomination |
| 5A | NOTE: JP1 and JP2 are multiplied by denomination only. |
| | JP0 = 4,000 x Max Bet x Denomination |
| | JP1 = 100,000 x Denomination |
| | JP2 = 5,000 x Denomination |
| 5B | NOTE: Max Bet includes bonus bet. |
| | JP0 = 4,000 x Max Bet x Denomination |
| | JP1 = 100,000 x Denomination |
| | JP2 = 5,000 x Denomination |
| 5C | JP0 = 100,000 x Denomination |
| | JP1 = 15,000 x Denomination |
| | JP2 = 5,000 x Denomination |
| 5D | JP0 = 200,000 x Denomination |
| | JP1 = 15,000 x Denomination |
| | JP2 = 5,000 x Denomination |
| 5E | NOTE: Max Bet includes bonus bet. |
| | JP0 = 500 x Max Bet x Denomination |
| | JP1 = 62.5 x Max Bet x Denomination |
| | JP2 = 25 x Max Bet x Denomination |



Alpha Game Platform™ Progressive Jackpot Configuration Data

| Jackpot Category | Setting |
|------------------|--------------------------------------|
| 5F | NOTE: Max Bet includes bonus bet. |
| | JP0 = 500 x Max Bet x Denomination |
| | JP1 = 62.5 x Max Bet x Denomination |
| | JP2 = 25 x Max Bet x Denomination |
| 5G | JP0 = 40,000 x Denomination |
| | JP1 = 4,000 x Denomination |
| 5H | JP0 = 20,000 x Denomination |
| | JP1 = 5,000 x Denomination |
| 5I | JP0 = 25,000 x Denomination |
| | JP1 = 2,500 x Denomination |
| 5J | JP0 = 1,000 x Denomination |
| | JP1 = 5,000 x Denomination |
| | JP2 = 10,000 x Denomination |
| | JP3 = 100,000 x Denomination |
| | JP4 = 1,000,000 x Denomination |
| | JP5 = 7,500 x Denomination |
| | JP6 = 50,000 x Denomination |
| 5K | JP0 = 100,000 x Denomination |
| | JP1 = 25,000 x Denomination |
| | JP2 = 10,000 x Denomination |
| | JP3 = 5,000 x Denomination |
| | JP4 = 2,500 x Denomination |
| 5L | JP0 = 200,000 x Denomination |
| | JP1 = 50,000 x Denomination |
| | JP2 = 20,000 x Denomination |
| | JP3 = 10,000 x Denomination |
| | JP4 = 5,000 x Denomination |
| 5M | NOTE: Max Bet includes bonus bet. |
| | JP0 = 500 x Max Bet x Denomination |
| | JP1 = 62.5 x Max Bet x Denomination |
| | JP2 = 25 x Max Bet x Denomination |
| 5N | JP0 = 20,000 x Denomination |
| | JP1 = 2,500 x Denomination |
| 5O | JP0 = 2,000 x Max Bet x Denomination |
| | JP1 = 1,000 x Max Bet x Denomination |
| | JP2 = 100 x Max Bet x Denomination |
| | JP3 = 50 x Max Bet x Denomination |
| | JP4 = 10 x Max Bet x Denomination |
| 5P | JP0 = 400,000 x Denomination |
| | JP1 = 1,000 x Denomination |



Alpha Game Platform™ Progressive Jackpot Configuration Data

| Jackpot Category | Setting |
|------------------|---------------------------------|
| 5Q | JP0 = 1,000,000 x Denomination |
| | JP1 = 100,000 x Denomination |
| | JP2 = 20,000 x Denomination |
| | JP3 = 10,000 x Denomination |
| | JP4 = 5,000 x Denomination |
| 5R | JP0 = 40,000,000 x Denomination |
| | JP1 = 100,000 x Denomination |
| | JP2 = 20,000 x Denomination |
| | JP3 = 10,000 x Denomination |
| | JP4 = 5,000 x Denomination |
| 5S | JP0 = 25,000 x Denomination |
| | JP1 = 5,000 x Denomination |
| | JP2 = 1,000 x Denomination |
| 5T | JP0 = 100,000 x Denomination |
| | JP1 = 10,000 x Denomination |
| 5U | JP0 = 40,000,000 x Denomination |



Alpha Game Platform™ Progressive Jackpot Configuration Data

GameMaker™ HD, Suite 7, Poker, Jackpot Category Settings

| Jackpot Category | Setting |
|------------------|--|
| PA | JP0 = 800 x Denomination x Max Total Bet, triggered by [Royal Flush] |
| | JP1 = 200 x Denomination x Max Total Bet, triggered by [Straight Flush] |
| | JP2 = 30 x Denomination x Max Total Bet, triggered by [4 of a Kind] |
| PB | JP0 = 800 x Denomination x Max Total Bet, triggered by [Royal Flush] |
| | JP1 = 60 x Denomination x Max Total Bet, triggered by [Straight Flush] |
| | JP2 = 400 x Denomination x Max Total Bet, triggered by [4 Aces] |
| | JP3 = 80 x Denomination x Max Total Bet, triggered by [Four 2s 3s 4s] |
| | JP4 = 50 x Denomination x Max Total Bet, triggered by [Four 5s - Ks] |
| PC | JP0 = 800 x Denomination x Max Total Bet, triggered by [Royal Flush] |
| | JP1 = 400 x Denomination x Max Total Bet, triggered by [4 Deuces + Ace] |
| | JP2 = 200 x Denomination x Max Total Bet, triggered by [4 Deuces] |
| PD | JP0 = 1000 x Denomination x Max Total Bet, triggered by [Royal Flush] |
| | JP1 = 400 x Denomination x Max Total Bet, triggered by [4 Deuces + Ace] |
| | JP2 = 200 x Denomination x Max Total Bet, triggered by [4 Deuces] |
| PE | JP0 = 800 x Denomination x Max Total Bet, triggered by [Royal Flush] |
| | JP1 = 50 x Denomination x Max Total Bet, triggered by [Straight Flush] |
| | JP2 = 80 x Denomination x Max Total Bet, triggered by [4 Aces] |
| | JP3 = 40 x Denomination x Max Total Bet, triggered by [4 2s 3s 4s] |
| PF | JP0 = 1000 x Denomination x Max Total Bet, triggered by [Royal Flush] |
| | JP1 = 50 x Denomination x Max Total Bet, triggered by [Straight Flush] |
| | JP2 = 80 x Denomination x Max Total Bet, triggered by [Four Aces] |
| | JP3 = 40 x Denomination x Max Total Bet, triggered by [Four 2s 3s 4s] |
| PG | JP0 = 800 x Denomination x Max Total Bet, triggered by [Royal Flush] |
| | JP1 = 200 x Denomination x Max Total Bet, triggered by [4 Deuces] |
| PH | JP0 = 800 x Denomination x Max Total Bet, triggered by [Royal Flush] |
| | JP1 = 50 x Denomination x Max Total Bet, triggered by [Straight Flush] |
| | JP2 = 160 x Denomination x Max Total Bet, triggered by [4 Aces] |
| | JP3 = 80 x Denomination x Max Total Bet, triggered by [4 2s 3s 4s] |
| | JP4 = 50 x Denomination x Max Total Bet, triggered by [4 of a Kind] |
| PI | JP0 = 800 x Denomination x Max Total Bet, triggered by [Royal Flush] |
| | JP1 = 50 x Denomination x Max Total Bet, triggered by [Straight Flush] |
| | JP2 = 400 x Denomination x Max Total Bet, triggered by [4 Aces + 2, 3, 4] |
| | JP3 = 160 x Denomination x Max Total Bet, triggered by [4 Aces] |
| | JP4 = 160 x Denomination x Max Total Bet, triggered by [4 2s 3s 4s + Ace, 2, 3, 4] |
| | JP5 = 80 x Denomination x Max Total Bet, triggered by [4 2s 3s 4s] |
| | JP6 = 50 x Denomination x Max Total Bet, triggered by [4 of a Kind] |



Alpha Game Platform™ Progressive Jackpot Configuration Data

| Jackpot Category | Setting |
|------------------|--|
| PJ | JP0 = 1000 x Denomination x Max Total Bet, triggered by [Royal Flush] |
| | JP1 = 50 x Denomination x Max Total Bet, triggered by [Straight Flush] |
| | JP2 = 400 x Denomination x Max Total Bet, triggered by [4 Aces + 2, 3, 4] |
| | JP3 = 160 x Denomination x Max Total Bet, triggered by [4 Aces] |
| | JP4 = 160 x Denomination x Max Total Bet, triggered by [4 Deuces + Ace, 2, 3, 4] |
| | JP5 = 80 x Denomination x Max Total Bet, triggered by [Four 2s 3s 4s] |
| | JP6 = 50 x Denomination x Max Total Bet, triggered by [Four 2s 3s 4s] |
| PK | JP0 = 800 x Denomination x Max Total Bet, triggered by [Royal Flush] |
| | JP1 = 50 x Denomination x Max Total Bet, triggered by [Straight Flush] |
| | JP2 = 25 x Denomination x Max Total Bet, triggered by [4 of a Kind] |
| PL | JP0 = 800 x Denomination x Max Total Bet, triggered by [Royal Flush] |
| | JP1 = 50 x Denomination x Max Total Bet, triggered by [Straight Flush] |
| | JP2 = 80 x Denomination x Max Total Bet, triggered by [4 of a Kind] |
| PM | JP0 = 1000 x Denomination x Max Total Bet, triggered by [Royal Flush] |
| | JP1 = 50 x Denomination x Max Total Bet, triggered by [Straight Flush] |
| | JP2 = 80 x Denomination x Max Total Bet, triggered by [4 of a Kind] |
| PN | JP0 = 940 x Denomination x Max Total Bet, triggered by [Royal Flush] |
| | JP1 = 50 x Denomination x Max Total Bet, triggered by [Straight Flush] |
| | JP2 = 200 x Denomination x Max Total Bet, triggered by [5 of a Kind] |
| | JP3 = 100 x Denomination x Max Total Bet, triggered by [Wild Royal Flush] |
| PO | JP0 = 800 x Denomination x Max Total Bet, triggered by [5 of a Kind] |
| | JP1 = 100 x Denomination x Max Total Bet, triggered by [Royal Flush] |
| | JP2 = 100 x Denomination x Max Total Bet, triggered by [Wild Royal Flush] |
| | JP3 = 100 x Denomination x Max Total Bet, triggered by [Straight Flush] |
| PP | JP0 = 2000 x Denomination x Max Total Bet, triggered by [Royal Flush] |
| | JP1 = 500 x Denomination x Max Total Bet, triggered by [4 Deuces] |
| | JP2 = 100 x Denomination x Max Total Bet, triggered by [Royal Flush with Deuce] |
| PQ | JP0 = 2000 x Denomination x Max Total Bet, triggered by [Royal Flush] |
| | JP1 = 400 x Denomination x Max Total Bet, triggered by [5 of a Kind] |
| | JP2 = 200 x Denomination x Max Total Bet, triggered by [Royal Flush with Joker] |
| | JP3 = 100 x Denomination x Max Total Bet, triggered by [Straight Flush] |
| PR | JP0 = 2000 x Denomination x Max Total Bet, triggered by [Royal Flush] |
| | JP1 = 240 x Denomination x Max Total Bet, triggered by [Straight Flush] |
| | JP2 = 120 x Denomination x Max Total Bet, triggered by [4 of a Kind] |



Alpha Game Platform™ Progressive Jackpot Configuration Data

| Jackpot Category | Setting |
|------------------|--|
| PS | JP0 = 1200 x Denomination x Max Total Bet, triggered by [Royal Flush] |
| | JP1 = 239 x Denomination x Max Total Bet, triggered by [Straight Flush] |
| | JP2 = 120 x Denomination x Max Total Bet, triggered by [4 of a Kind] |
| PT | JP0 = 800 x Denomination x Max Total Bet, triggered by [Royal Flush] |
| | JP1 = 50 x Denomination x Max Total Bet, triggered by [Straight Flush] |
| | JP2 = 800 x Denomination x Max Total Bet, triggered by [4 Aces + 2, 3, 4] |
| | JP3 = 160 x Denomination x Max Total Bet, triggered by [4 Aces] |
| | JP4 = 400 x Denomination x Max Total Bet, triggered by [4 2s 3s 4s + Ace, 2, 3, 4] |
| | JP5 = 80 x Denomination x Max Total Bet, triggered by [4 2s, 3s, 4s] |
| | JP6 = 50 x Denomination x Max Total Bet, triggered by [4 of a Kind] |

GameMaker™ HD, Suite 7, Slot, Jackpot Category Settings

| Jackpot Category | Setting |
|------------------|--|
| SA | JP0 = 100000 x Denomination, triggered by [B7 B7 B7 B7 B7 on line] |
| | JP1 = 10000 x Denomination, triggered by [B7 B7 B7 B7 -- on line] |
| | JP2 = 2000 x Denomination, triggered by [B7 B7 B7 -- -- on line] |
| SB | JP0 = 10000 x Denomination x Max Line Bet, triggered by [2X R7 2X R7 5X on line] |
| | JP1 = 6000 x Denomination x Max Line Bet, triggered by [2X R7 2X R7 3X on line] |
| | JP2 = 4000 x Denomination x Max Line Bet, triggered by [2X R7 2X R7 2X on line] |